

Valerus Camera Compatibility Tool



XX285-90



Vicon Industries Inc. does not warrant that the functions contained in this equipment will meet your requirements or that the operation will be entirely error free or perform precisely as described in the documentation. This system has not been designed to be used in life-critical situations and must not be used for this purpose.

Document Number: 8009-8285-90-00 Rev: 4/17
Product specifications subject to change without notice
Copyright © 2017 Vicon Industries Inc. All rights reserved.

Vicon Industries Inc.

Tel: 631-952-2288) Fax: 631-951-2288

Toll Free: 800-645-9116

24-Hour Technical Support: 800-34-VICON
(800-348-4266)

UK: 44/(0) 1489-566300

www.vicon-security.com

Table of Contents

General	3
Tool Usage	3
How to Use the Tool	3
Generated Report	4
Saving and Exporting	5
Summary	5

General

The Valerus™ camera tester is a simple tool designed to help to determine the compatibility of IP cameras or encoders with the Valerus VMS. Since the Valerus VMS is based on the ONVIF standard, it should be able to easily communicate with any device properly supporting this standard.

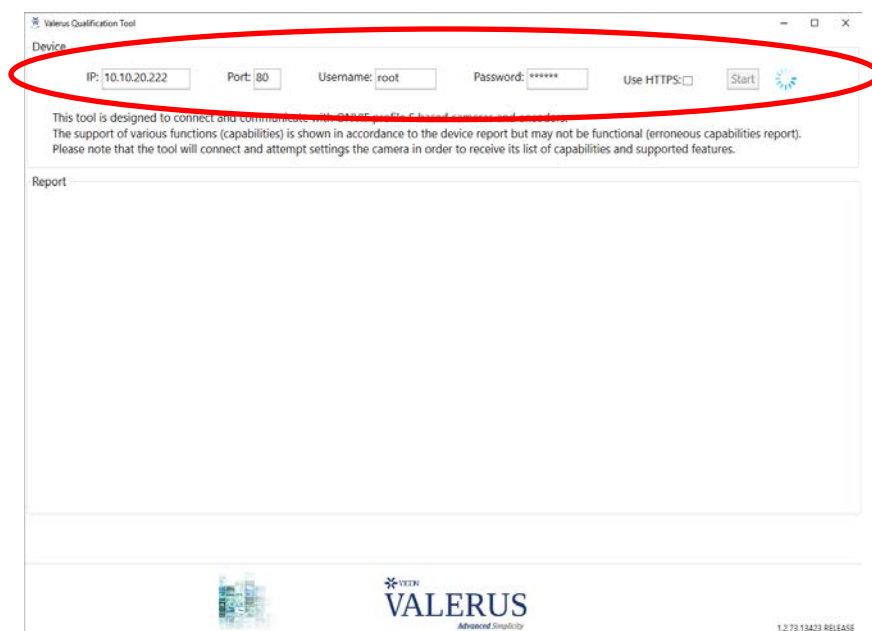
Tool Usage

When it is necessary to evaluate a specific camera's compatibility with Valerus - if it is supported at all and, if so, which of its features are supported - this tool will connect to the camera over IP and perform a set of commands to read and configure the camera. The results of these commands will be shown on a simple report highlighting the major functionality.

Note: This tool will attempt configure streams on the camera and might change it from its current settings during the process.

How to Use the Tool

- Run the tool on a PC that has IP access to the camera that is being tested (ping the camera to verify).
- Enter the camera's IP address.
- Enter the port used by ONVIF on the camera (typically 80, 8000 or 8080).
- Enter the username and password; this should be an admin level user.
- If you are testing an HTTPS camera, check the box.
- Click the Start button and allow the test to run.



Generated Report

The report generated has a few sections:

- **Functionality and Status (table):** Will show the main functions and the expected status in Valerus, indicating either supported or not supported.
- **Device Information:** The tested device information, including if it is a Vicon or other manufacturer's device.
- **Video Channels:** The video streams the tool configured to the device. This should show at least one stream (ideally two) per camera and, in the case of an encoder, per each camera for the device to function properly in Valerus.
- **Audio Input Channels:** The audio inputs and their codec.

Valerus Qualification Tool

4/20/2017

Test Result: Device Supported

Device Capabilities

Feature	Support	Comment
Video	v	
Audio	v	
PTZ (MFZ lens identifies as PTZ)	v	
Create Preset	X	
Create and Update Preset Tour	X	
Relay	v	
Digital Inputs	v	
Imaging Settings	v	
Brightness	v	
Contrast	v	
Color	v	
Back Light Compensation	X	
WDR	X	
Day Night	v	
Focus	v	
VMD Event	X	

Device Information

- Manufacture: VICON
 - Is vicon device: True
 - Model: V922D-N39M-IP
 - Firmware version: 1.9.4-T6_release
 - IP and port: 10.10.20.133:80

Video Channels

- Video 1: H264, 1280x1024, 24fps
 H264, 640x480, 25fps

Audio Input Channels

- Audio 1: PCMU

Version: 1.2.73.13423 RELEASE

Sample Report

Saving and Exporting

If the results need to be saved, click the Export Report button and save as a PDF document. If further support is needed or if instructed by Vicon Technical Support, click on Save Logs to save a detailed log in a zip folder that can be emailed to Vicon support.

Save Logs

Export Report



Summary

This tool provides a fast and simple way to certify if a specific camera will work in Valerus. Be aware that the tool tests for basic functionality only; for full and final results, the camera will need to be connected to Valerus itself.

The tool makes configuration changes to the camera as part of the tests.

