

March 2016

V9xx Series Cameras Firmware

General Description

Vicon has released the latest firmware for a list of V9xx series of cameras. The accompanying Smart Manager discovery tool has been updated to version 2.3.3.5. It is important to remember that when these cameras are used, ViconNet version should be minimum 6.6.71 (SP2).

The updated firmware is as follows:

Camera	Older Firmware	Newest Firmware
V920D, V921D, V921B and V922B	T4_V2.3.1	T4_V2.3.9
V922D, V923D, V-CELL-HD, V923B, CE202D-N and CE202D-WNPT	T6_V2.0.6	T6_V2.1.4
CE102D-NIR and CE102B-NIR	T8_V1.5.8	T8_V1.6.6

Vicon Production

The latest firmware and discovery tool are available on Vicon's website. A link is provided in the installation section of this document. Production will switch over to the new firmware for new cameras.

This is not a mandatory update, however it offers general stability fixes.

Firmware Updates

ONVIF and Web Service lock up

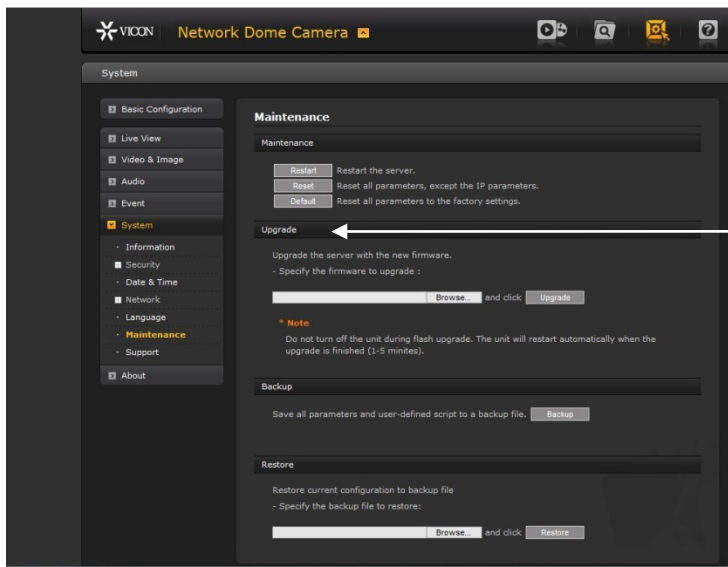
In some cases, a camera that had multiple clients polling events from the cameras caused the camera ONVIF and web services to lock up, resulting in a communication error message when trying to access the camera. This has been addressed. Reports of lockup on extreme load are still under investigation.

Installing the Updated Firmware

The latest firmware is available on Vicon's website from the Support tab – Technical Support – Software Downloads – Vicon Network Camera Software; a link is provided below.

<http://www.vicon-security.com/support-technical-support-software-downloads-network-cameras.htm>

Download the firmware to your PC. Go to the camera's Maintenance screen.



Upgrade

Go to the Upgrade section and use the Browse button to locate the firmware on your PC. Press the Upgrade button. During the upgrade process, do not turn off the power to the camera. Wait at least 5 minutes and access the camera again. The new firmware should be installed. This can be checked from the Basic Configuration screen.

