

## IQeye 510, 511 & 700 Series Quick Install Guide

1.

Plug the IQeye camera into the network.

2.

Before applying power verify the correct power supply is being used.

### **IQeye510, 511 & 700 Series Cameras**

The IQeye510, 511 & 700 Series cameras can be powered directly or via the Ethernet using an IEEE 802.3af power source.



**IQeye510 Cameras**

**IQeye511 Cameras**

**IQeye700 Series Cameras**

**Powered Direct:** The input voltage is 12 - 24 VDC or 24 VAC, and the polarity is not important.

**Powered via the Ethernet:** Requires an IEEE 802.3af compliant Power over Ethernet (PoE) power injector or switch.

### **Power Source Warning:**

**The IQeye510, 511 & 700 Series cameras cannot be powered via the IQinVision proprietary IQpoet (Power Over Ethernet) Injector.**

### 3.

After power is applied, the IQeye511 & 700 Series cameras can be focused using a field service monitor. If no analog monitor is available then focus must be performed by using a browser to view the camera images.

#### **IQeye511 Cameras:**

The analog “Video Out” of the IQeye511 camera is a female RCA connector. The



analog video is only available for viewing until the first digital image is requested via the Ethernet connection.

The IQeye511 utilizes the IQfocus utility to simplify focusing. The analog monitor will display the overall image with the center of the image digitally zoomed in the middle of the screen. Below the digitally zoomed image are two bar meters that indicate optimal focus.



Moving the focus ring on the lens will cause the two bar meters to move left and right. The goal is to have the bottom meter as far to the right as possible.

#### **IQeye700 Series Cameras:**

The analog video output of the IQeye 700 series cameras is a female BNC connector. The analog video is available simultaneously with digital images via the Ethernet.



Adjust the focus ring on the lens for the best possible focus.

*Note: the IQfocus utility is not available on the IQeye700 Series camera.*

4.

Insert the **IQtools CD** into the CD drive of the PC. The IQfinder installation application will launch automatically. Click the **“Check if this PC is ready to view IQeye cameras”** button.



5.

If the **“Congratulations! Java version...”** message is displayed, Click **“OK”**. Go to step 8.

6.

If the message **“The computer does not have the necessary version of Java...”** is displayed, click **“Yes”** to install the **Sun Java VM**. *Note: you will require administrative privileges on the PC to install the Java VM.*

7.

Restart the PC after installing Java and launch the **IQtools** application again.

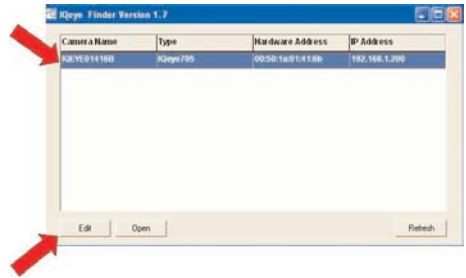
8.

Click the **“Scan for IQeye cameras on my network”** button to find IQeye cameras.



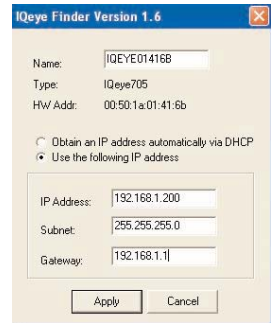
9.

The detected cameras will be displayed in the IQfinder window. Highlight a camera from the list and click the “Edit” button to edit the selected camera’s IP settings.



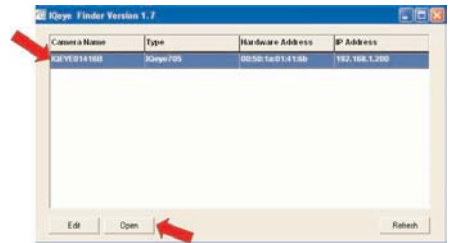
10.

The Edit window allows the Name, IP address, Subnet, and Gateway of the camera to be changed. It also allows the camera to be configured for DHCP. Click the “Apply” button after making the desired changes. *Note: Changing between a static IP address and DHCP will require the camera to be rebooted.*



11.

To view a camera “Double click” on a camera entry in the list or click the “Open” button. The “Live” page will be displayed. *Note: It’s also possible to open Internet Explorer, and enter the IP address of the IQeye device in the address field of the browser.*



12.

To perform further configuration of the camera click on the “Settings” tab. *Note: that the default username is “root” and the default password is “system”.*

**For further information see the IQeye documentation on the installation CD or at <http://www.iqeye.com>.**