

## IQeye Event Recording System (ERS)

### Product Description

The IQeye Event Recording System (ERS) is a self-contained, High-Definition megapixel network recorder that provides a zero bandwidth profile to record crisp, clear video. IQeye ERS can record more than 20,000 independent motion video events, as well as time lapse video.

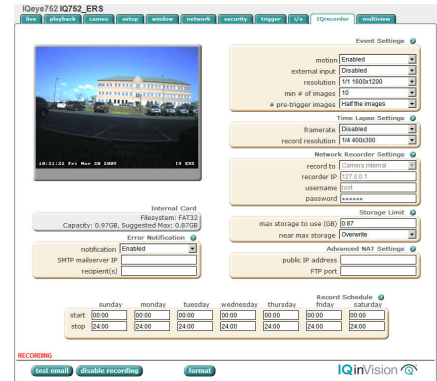
Right out of the box, IQeye ERS is configured to begin on-camera recording based on motion activities. Simply mount the camera, power it up, adjust your field of view and focus, and IQeye ERS is recording.

### Installation

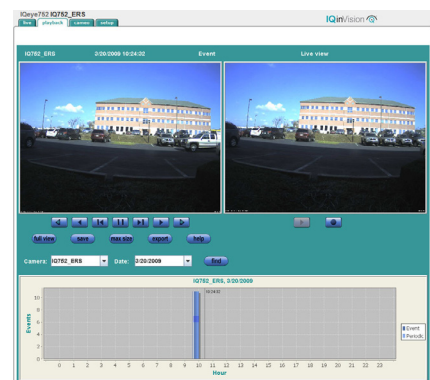
The IQeye ERS quick guide reviews some of the settings on the IQrecorder setup tab so necessary adjustments can be made.

### Default IQrecorder Settings

Your IQeye ERS will record video motion right out of the box. Adjustments to these settings can be made as needed. Should you have questions about enabling the external triggered recorder through the camera I/O port or enabling time-lapse recording, please refer to the help guide instructions on the IQrecorder setup tab interface. See chart below for default settings.



IQrecorder Set-Up Tab



IQrecorder Playback Page

Event Settings	Default
Motion	Enabled
External input	Disabled
Resolution	1/1 (1600x1200)
Min # of images	10
# pre-trigger images	Half the images

Time Lapse Settings	Default
Framerate	disabled
Record resolution	¼ (400x300)

Network Recorder Settings	Default
Record to	Camera internal
recorder IP	127.0.0.1
username	root
password	system

Network Recorder Settings	Default
Storage Limit	Default
max storage to use (GB)	27.5 GB
near max storage	Overwrite



33122 Valle Road  
 San Juan Capistrano, CA 92675-4853 USA  
 toll-free within U.S. 877.850.0805  
 phone +1.949.369.8100  
 fax +1.949.369.8105

© 2009 IQinVision, Inc. 901-0130 Rev. A

[www.iqeye.com](http://www.iqeye.com)