

XX113-58-00



VN-DRV Driver Disk Software

Software Manual

Vicon Industries Inc. does not warrant that the functions contained in this equipment will meet your requirements or that the operation will be entirely error free or perform precisely as described in the documentation. This system has not been designed to be used in life-critical situations and must not be used for this purpose.

Copyright © 2008 Vicon Industries Inc. All rights reserved.
Product specifications subject to change without notice.
ViconNet and its logo are registered trademarks of Vicon Industries Inc.
Collector Elite and its logo are trademarks of Vicon Industries Inc.
Vicon and its logo are registered trademarks of Vicon Industries Inc.

VICON INDUSTRIES INC., 89 ARKAY DRIVE, HAUPPAUGE, NEW YORK 11788
TEL: 631-952-CCTV (2288) FAX: 631-951-CCTV (2288) TOLL FREE: 800-645-9116
24-Hour Technical Support: 800-34-VICON (800-348-4266)
UK: +44 (0) 1489-566300 WEB: www.vicon-cctv.com





Dear Valued Customer:

Thank you for selecting Vicon systems and products for your video needs.

Since Vicon's beginning in 1967, our only business has been the design, engineering, and production of the highest quality video systems and equipment for use in a wide variety of security, safety, control, surveillance, and communication applications.

We stand behind the quality and dependability of every product with an industry leading Beneficial Use warranty.

If you are not satisfied with a Vicon product or service, I would like to know. Your complete satisfaction is the mission of every Vicon employee.

Sincerely,

A handwritten signature in black ink, appearing to read "Kenneth M. Darby". The signature is fluid and cursive, with a long horizontal stroke extending to the right.

Kenneth M. Darby
President

Contents

- CONTENTS 1**
- INTRODUCTION.....2**
 - How to Use this Manual2
 - Unpacking and Inspection.....2
- INSTALLATION3**
 - Uninstallation.....5
- DRIVER INFORMATION6**
 - Camera Domes6
 - Keypads/Joysticks6
- SHIPPING INSTRUCTIONS8**

Introduction

The information in this manual covers the installation and configuration of the ViconNet VN-DRV Driver Disk Software. The software should be installed on a suitable computer platform by a user experienced in Windows® operating systems.

The VN-DRV Driver Disk was designed to work with the Kollektor Elite Digital Video Recorder and ViconNet Workstation software. The recorder is a state-of-the-art, Windows-based computer in an attractive industrial steel case. The software was specifically designed to work with Vicon's ViconNet software application. For software information, refer to the Kollektor Elite or ViconNet Software manual.

Vicon requires the use of line conditioners: voltage regulators and uninterruptible power supply (UPS) systems in the electrical power service. Failure to comply will result in violation of the warranty.

The illustrations used in this document are based on Driver version 912. This is just an example; the same procedure can be used to update to the current driver.

NOTE: Read all instructions before beginning any installation.

How to Use this Manual

This manual was designed to provide the best overall instructions for the installation and configuration of the VN-DRV Driver Disk Software. The graphics and terminology used in this manual have been carefully selected to enable a clear and distinct understanding of the software and its use.

This manual was written using the available features in the latest revision (Rev. 912 in the examples) of the VN-DRV software. The actual version of software being used may vary and support different features than actually described here.

Unpacking and Inspection

All Vicon equipment is tested and inspected before leaving the factory. It is the carrier's responsibility to provide suitable delivery.

Inspect the cartons upon delivery and, if damage is present, make detailed notes on the carrier's bill. Then, obtain the carrier agent's signature and file a damage claim as soon as possible.

Open the cartons and inspect the equipment for damage. Save the cartons and packing material. If damage is present, contact the carrier and file a damage claim immediately. If the equipment must be returned for repair, follow the instructions in the Shipping Information Section of this manual.

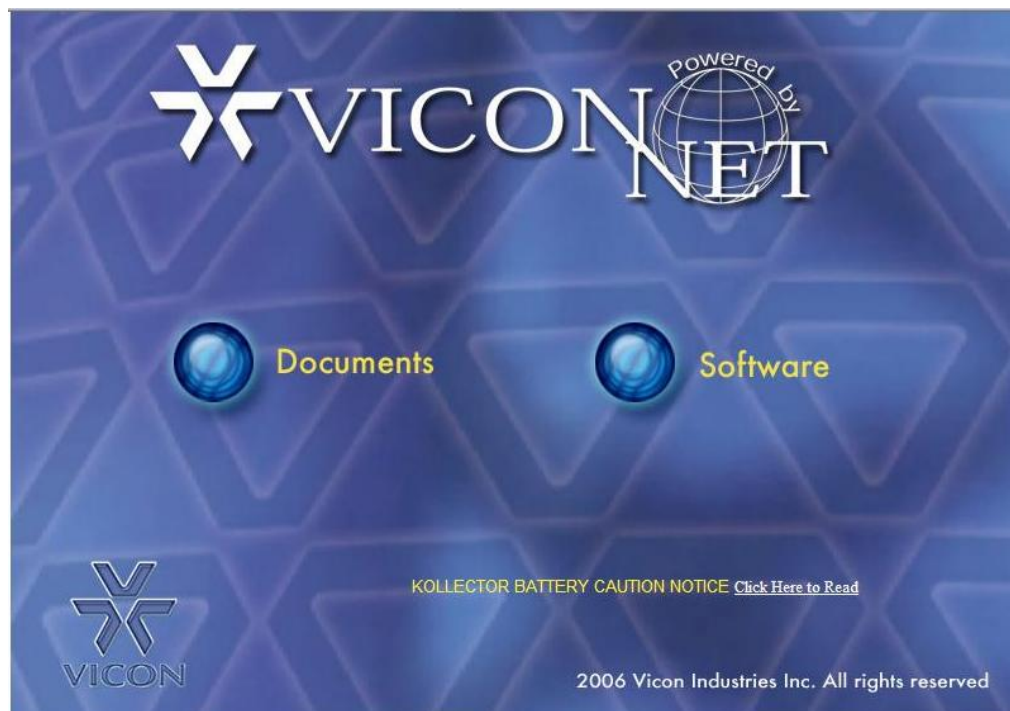
Installation

These steps provide the most thorough and accurate instructions for software installation on a Kollector Elite, Kollector Pro, VN-NVR, VN-NVR or VN1000 installed on a suitable computer. Before installation, it is necessary that the Kollector Elite and Pro meet the minimum requirements:

- Hardware “as configured” from the factory (no modifications or additions).
- For 2.X and 2.XX versions, install as detailed below. However, if PTZ drivers fail to operate, reinstall the new driver and run the “repair” option to solve the problem.
- For 3.X versions, install as detailed below.
- For 4.X versions, install as detailed below.

NOTE: A basic knowledge of Windows platform is required to install the software.

1. Remove the ViconNet Version 3/4 from its jacket. Be sure to handle the CD by its edges and not touch the data (shiny) surface.
2. At the Main Screen, select the Setup button on the top toolbar. The System Settings window will display. Select the “Exit to OS” button at the bottom of this window. Select the Yes button to terminate the application; the Windows desktop will appear.
3. At the desktop, insert the CD into the drive. This CD will Autorun. A page will appear as shown in Screen 1. Select the Software button to proceed.



Screen 1

4. At the next screen, select the ViconNet Drivers link. The software will install as shown in Screen 2.



ViconNet Software

Click on the the line item below to start install.

NOTE:
IP Camera and KTX-4 software is compatible with new Daylight Savings Time.

ViconNet Video Management Software

- [Version 4 Software](#)
- [ViconNet Drivers](#)
- [2007 Daylight Saving Patch for Collectors](#)
- [VN-Web Server Setup](#)
- [DVD 1](#)
- [Rear Panel Drivers](#)

ViconNet IP Cameras

- [IP Camera Setup](#)

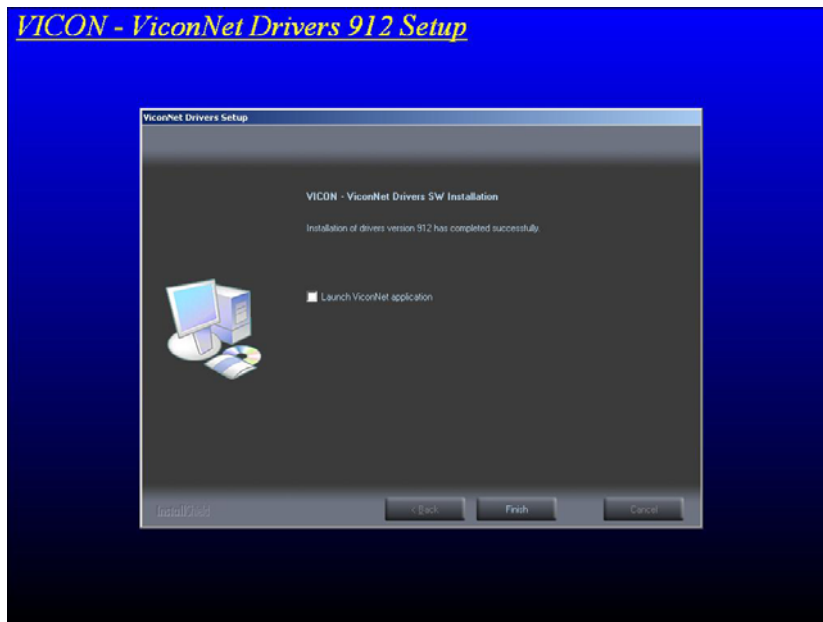
ViconNet KTX-4

- [KTX-4 Setup](#)

Screen 2

5. When installation is complete, a screen will confirm that the software has installed. Select the checkbox if it is desired to run the ViconNet application and then select the Finish button to continue as shown in **Screen 3**. Refer to the unit software manual for use of the PTZ drivers.

NOTE: If a screen appears during this installation that prompts you to Modify, Repair or Remove the software, refer to the software installation procedure for the currently installed version.

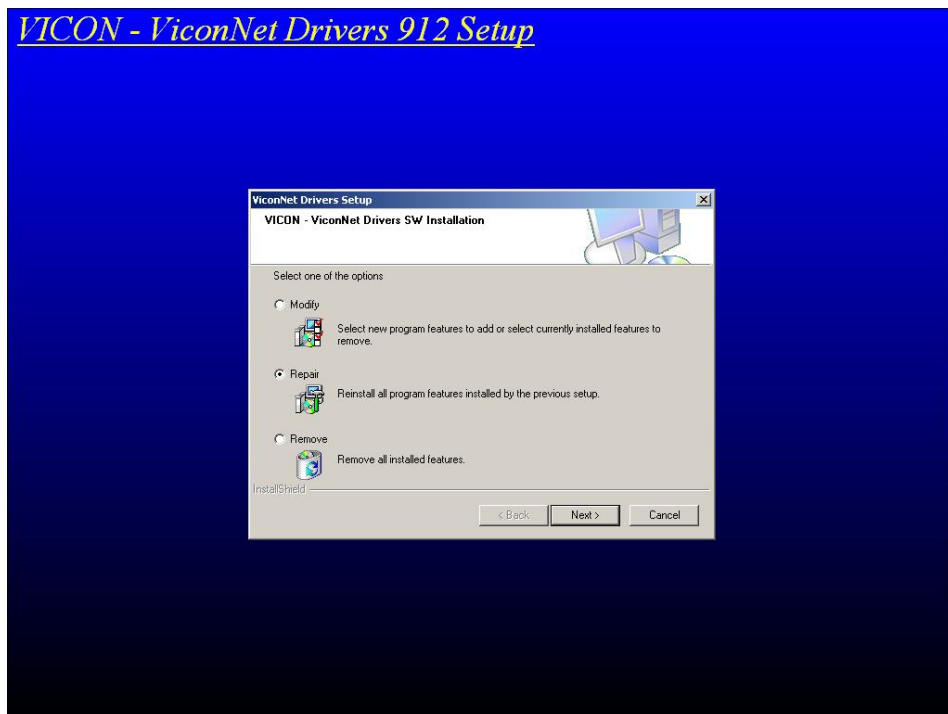


Screen 3

Uninstallation

Follow the steps below to uninstall the previous version driver (Version 912 driver in this example).

1. At the Main Screen, select the Setup button on the top toolbar. The System Settings window will display. Select the "Exit to OS" button at the bottom of this window. Select the Yes button to terminate the application; the Windows desktop will appear.
2. At the desktop, insert the ViconNet Version 3/4 CD into the drive. This CD will Autorun.
3. Select the Software and ViconNet Drivers links. The current driver will be detected and the screen shown in **Screen 4** will appear. From the choices Modify, Repair or Remove; choose Remove.
4. Select the Next button to continue.
5. When uninstallation is complete, a screen will confirm that the software has been removed. Select the Finish button to continue.
6. Uninstallation is complete.



Screen 4

Driver Information

The current drivers included on this CD are for PTZ camera and keypad operation.

Camera Domes

The following manufacturers are supported:

Elbex Firmware 0.77
Elbex Firmware 0.91
Ernitec Speed Dome
Kalatel
Panasonic WV-CS580(A)
Pelco, version D
Pelco, version P
Philips
Samsung
Samsung SCC-931T
Sensormatic, for SpeedDome
Ultrak, for Pelco D
Vicon, for SurveyorVFT Camera Domes
Vicon SurveyorVFT by Pelco D

The following are the communication protocols supported:

CAMERA TYPE	BAUD RATES	DATA BITS	STOP BITS	PARITY
Elbex Firmware 0.77	4800	8	1	None
Elbex Firmware 0.91	4800	8	1	None
Ernitec - Speed Dome	2400...9600	8	1	Even
Kalatel	2400...9600	8	1	None
Panasonic WV-CS580(A)	2400...19200	8	1	None
Pelco P	2400...9600	8	1	None
Philips	9600...9600	8	1	None
Samsung	4800...38400	8	1	None
Samsung SCC-931T	4800...38400	8	1	None
Sensormatic	4800	8	1	None
Ultrak by Pelco D	2400	8	1	Even
Vicon	2400...9600	8	1	None
Vicon SurveyorVFT by Pelco D	2400	8	1	None

Keypads/Joysticks

The following Vicon Keypads are supported:

V1411X-DVC, V1411J-DVC, V1410X-DVC

Refer to the ViconNet or Kollektor software manuals for specific driver installation and operation. The following are guidelines in using this driver:

1. When installing these keypads to a Kollektor Pro unit, a USB to Serial Port converter must be used as there is no available COM port. Follow the installation instructions for the specific converter chosen.
2. When using a USB to Serial Port converter on any Kollektor or Network Video Recorder, beware that any interruption in keypad communication will require a toggling of the control from OFFLINE to ONLINE in the software. Failure to do this will result in a keypad remaining offline.

3. When addressing a keypad, do not set to the following addresses:
 - a. 0 – this will set the keypad to Standalone (CPU) mode and it will not communicate with ViconNet.
 - b. >64 – this could cause erroneous results such as an offline condition or other function to begin.
4. When operating ViconNet, beware not to accidentally select the Controls button. This will automatically put the keypad offline. The user must toggle the keypad control back on to bring the keypad online.
5. If it is desired to change any keypad driver characteristic except the baud rate, it is necessary to delete the driver and add a new one with the modified characteristics.
6. This driver does not support the dome's autopan function.
7. This driver does not support presets or the preset key.

Shipping Instructions

Use the following procedure when returning a unit to the factory:

1. Call or write Vicon for a Return Authorization (R.A.) at one of the locations listed below. Record the name of the Vicon employee who issued the R.A.

Vicon Industries Inc.
89 Arkay Drive
Hauppauge, NY 11788
Phone: 631-952-CCTV (2288); Toll-Free: 1-800-645-9116; Fax: 631-951-CCTV (2288)

For service or returns from countries in Europe, contact:

Vicon Europe Ltd
Brunel Way
Fareham, PO15 5TX
United Kingdom
Phone: +44 (0)1489/566300; Fax: +44 (0)1489/566322

2. Attach a sheet of paper to the unit with the following information:
 - a. Name and address of the company returning the unit
 - b. Name of the Vicon employee who issued the R.A.
 - c. R. A. number
 - d. Brief description of the installation
 - a. Complete description of the problem and circumstances under which it occurs
 - b. Unit's original date of purchase, if still under warranty
3. Pack the unit carefully. Use the original shipping carton or its equivalent for maximum protection.
4. Mark the R.A. number on the outside of the carton on the shipping label.

Vicon Industries Inc.

Corporate Headquarters

89 Arkay Drive
Hauppauge, New York 11788
631-952-CCTV (2288) 800-645-9116
Fax: 631-951-CCTV (2288)

Vicon Europe Headquarters

Brunel Way
Fareham, PO15 5TX
United Kingdom
+44 (0) 1489 566300
Fax: +44 (0) 1489 566322

Germany

vin-videotronic infosystems gmbh
Lahnstrasse 1
D-24539 Neumuenster
Phone: +49 (0) 4321 8790
Fax: +49 (0) 4321 879 47

Far East Office

Unit 5, 17/F, Metropole Square
2 On Yiu Street, Shatin
New Territories,
Hong Kong
(852) 2145-7118
Fax: (852) 2145-7117

Internet Address: www.vicon-cctv.com

