

XX252-40-00

Setup Guide for IQeye® Cameras

Vicon Industries Inc.

Tel: 631-952-2288 Fax: 631-951-2288 Toll Free: 800-645-9116
24-Hour Technical Support: 800-34-VICON (800-348-4266) UK: 44/(0) 1489-566300

Vicon Industries Inc. does not warrant that the functions contained in this equipment will meet your requirements or that the operation will be entirely error free or perform precisely as described in the documentation. This system has not been designed to be used in life-critical situations and must not be used for this purpose.

www.vicon-security.com

Connecting IQeye Cameras to ViconNet



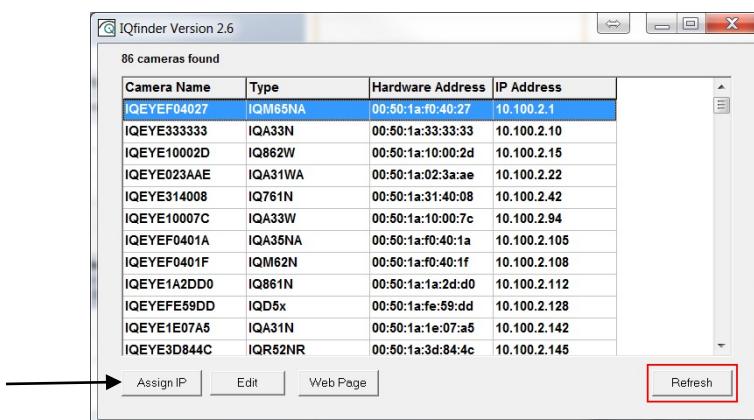
This is a step-by-step procedure to set up IQeye® cameras for use with the ViconNet® Video Management System. It assumes an understanding of ViconNet and the camera. Refer to the ViconNet and camera manuals for detailed information.

The camera has a IQfinder (Discovery) tool that provides a way for it to be seen on the network. After it has been added to the network, the camera is then connected to the ViconNet system.

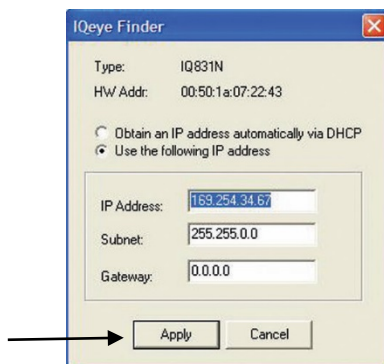
Camera Discovery

The camera is accessed through a standard web browser; Windows® Internet Explorer®, Safari®, Firefox® and Google® Chrome® with Windows are recommended. If the IP address of the camera is not known, use the camera's IQfinder (Discovery) tool. By default, the camera is set to obtain the IP address automatically via DHCP; if your network does not have DHCP, the camera will self-assign an IP address using Automatic Private IP addressing.

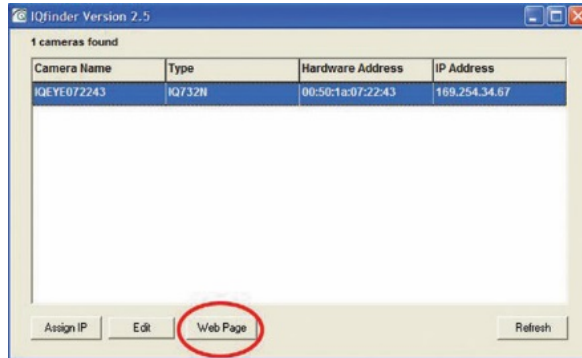
1. Execute the IQfinder (from the Installation CD); scan for camera on the network. The detected cameras will display in the window.
2. Select the camera on the list and click Assign IP.



3. The Assign IP menu allows the IP address, Subnet and Gateway of the camera to be changed or the camera can be configured for DHCP operation. Click the Apply button after making changes.



4. To view a camera, double-click a camera entry or highlight a camera in the list and click the Web Page button. The Live page will display through the default browser (Internet Explorer is recommended). (If you have access to a web browser and know the camera IP address, you can go directly to the camera browser interface to configure the network.)



Adding Cameras to the Nucleus




The camera must be added to the Nucleus of the system to be recognized on the ViconNet site list.

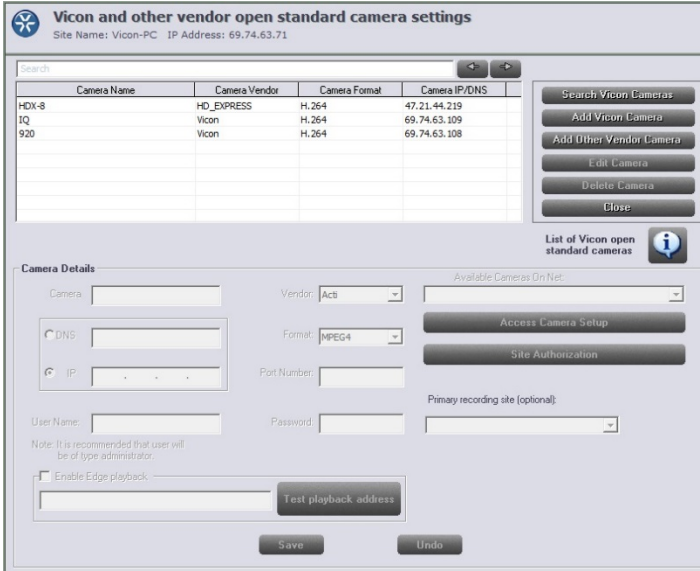
These cameras do not require a license, but do not automatically show up on the site list and must be added to the ViconNet system. Refer to the camera manual for details on installation and setup of the camera.

Note:


These cameras do not need to be registered and only need to be added once in the Nucleus for the entire system.


The camera name is determined by the Host name configured from the camera's web interface. This is the name that will show up in the ViconNet site list.

1. From the ViconNet Main window, click . The Setup Site Selection window is displayed.
2. Select the Nucleus for which you want to configure the camera and click . The System Settings window is displayed.
3. From the System Settings window, select the  button.





Camera Name	Camera Vendor	Camera Format	Camera IP/DNS
HDX-8	HD_EXPRESS	H.264	47.21.44.219
IQ	Vicon	H.264	69.74.63.109
920	Vicon	H.264	69.74.63.108

4. Click  on the Open Standard Camera settings screen.
5. The detected cameras are displayed and are added automatically to the list. A message will display to add a User Name and Password for

each detected camera. The User Name and Password for the camera are the camera's identity in its browser. It is recommended that the user be administrator level to be able to access all camera features. After being named, the camera can be activated. Click on the camera. Click the  button. The Camera Details area will become enabled.

Note:

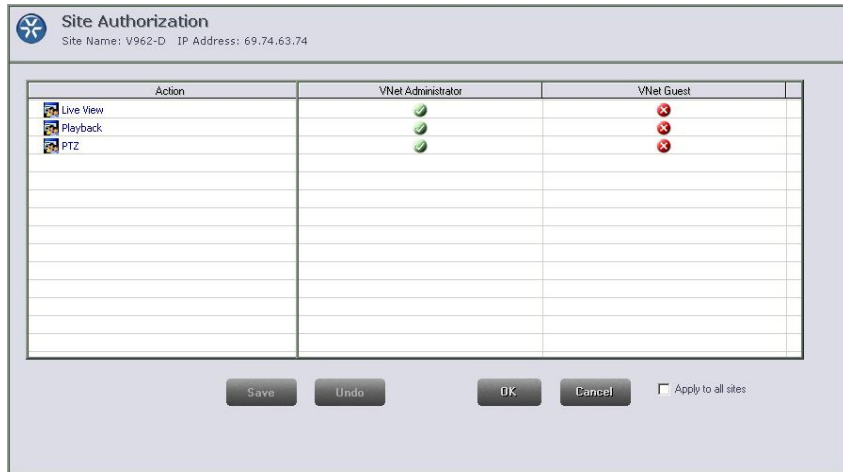
Cameras will only be detected if they are on the same LAN as the PC. Cameras that are not on the LAN have to be added manually. Refer to the instruction manual for the camera to add cameras manually.

1. Enter a Camera Name for this camera and select IP or DNS.
2. The format is set from the camera's Video Settings screen. Select the same format, H.264 or M-JPEG.
3. The Port Number will default to 80.
4. Enter a User Name and Password for this camera. It is recommended that the user be administrator level to be able to access all camera features. If you want to specify a site where the camera is recorded (instead of automatic recording search), select it from the dropdown Primary recording site list; this is an optional setting. Default User and Password are "root" and "system."
5. There is a checkbox to Enable Edge playback. This allows a camera to be played back directly from the camera itself, not from ViconNet (for example the micro SD card). You can test the playback address by clicking . When Edge playback is enabled, the camera playback interface will display and playback is viewed from there. A camera can record both on ViconNet and internally to a micro SD card.
6. Click **Save** to save the settings. An **Undo** button is provided.
7. Click the  button for a direct link to the browser for that camera. Click **Save** and **Close**.
8. To use Quick Playback, select the Quick Playback Storage Source. From the dropdown list, select from the list of available resources to record the camera.



9. Click on the  button. This opens a screen that allows setting up authorization for Live View, Playback and PTZ actions by selecting () or deselecting () the appropriate categories, as required. If all cameras are to

have the same authorizations, check Apply to all cameras box to avoid setting up each camera individually.



When this procedure is complete, the camera will appear on the ViconNet site list and there will be access to the video.

Vicon Industries Inc.

For office locations, visit the website:

www.vicon-security.com

