



# Release Notes

November 2022

## Firmware Update for Camera Models V2102D-W313MIR, V2102B-W313MIR, V2102B-W28IR, V2105D-W313MIR, V2105B-W313MIR and V2105B-W28IR

### General Description

Vicon has released firmware for production for the cameras listed below.  
The accompanying PRONTO Device Manager Software V2.10 is available on Vicon's website.

These cameras and firmware version have been tested and validated with Vicon's Valerus VMS and with ViconNet V8.x.

Camera	Product Code	Older Firmware	Newest Firmware
V2102B-W313MIR	10558-05	VCNT.01.00.0.11.5001	VCNT.01.00.0.11.5849
V2105B-W313MIR	10558-25		
V2102B-W28IR	10558-00		
V2105B-W28IR	10558-20		
V2102D-W313MIR	10557-00		
V2105D-W313MIR	10557-10		

### Vicon Production

The latest firmware and discovery tool are available on Vicon's website.  
A link is provided in the installation section of this document.  
Manufacturing will start using the released firmware for camera production.

Please review the installation instructions described at the end of this document.



# Release Notes

## New Features

### Spanish language

Spanish has been added to the language options of the camera interface.

### Test email

The camera can send emails when an event is triggered. When one of the parameters in the email configuration was wrong, an email would not be sent, without any indication of the reason for the failed attempt. This made it hard to troubleshoot. The camera will now show a message with clear error details. Also, there is now a "Test Email" button to send a test email without having to wait for a triggered event. Optionally, an image snapshot can be included in the email.

## Fixed issues

### SSH Weak algorithm

An issue was fixed where the device was reported in vulnerability scanners with an "SSH Weak Key exchange" warning.

### Request option in SSL tab

A request option was added in the SSL tab in the Generate Certificate section.

### Access to SD card

An issue was fixed where the camera FTP server root directory was not pointing to the SD card, and the recorded images were not accessible.

### IP Toolbox

There were situations where IP Toolbox could not upload new firmware into the camera. This has been corrected.

### ONVIF service

It was possible that the camera's ONVIF service would not start or shut down when the camera was moved from Vicon's ViconNet to Valerius VMS. This has been corrected.

### SNMP "GETBULK" vulnerability

An issue was fixed where the device was reported in vulnerability scanners with a SNMP "GETBULK" Reflection DDOS warning.

### SSH and FTP

An issue was fixed where FTP and SSH cannot be enabled at the same time.

### Low light image

Some adjustments were made to improve the image quality and reduce noise in low light conditions.

### RTSP timestamp

The timestamp in the RTSP stream data could be incorrect, causing small jumps in the video stream. This has been corrected.



# Release Notes

## Optimize bitrates

Some changes have been made to optimize the default bitrate with every selected resolution in framerate.

## ONVIF compliance

Some changes were made to maintain ONVIF compliance.

## False motion detection

When the camera switches from day to night and vice-versa, a false motion detection alarm could be generated. This has been corrected.

## TLS1.1/1.1 deprecated

An issue was fixed where the device was reported in vulnerability scanners with a "TLS1.1/1.1 deprecated" warning.

## Resolution added

A specific resolution was added for the 2nd stream that was in the specifications but not implemented.

## Get ONVIF profile - CVBR

When the camera would receive a "Get ONVIF profile" command, it would change the bitrate method to CVBR and override the user selected method. This has been addressed and the camera now stays at the method selected by the user.

## Disconnects in multicast

Under specific circumstances it was possible that a video stream shows a short interruption when the multicast network protocol is used. This has been corrected.

## Yellowish image after firmware update

There were reports of a yellow hue in the image after a firmware update. This would vanish after the camera was reset. The firmware has been modified to retain all image parameters after a firmware update, so a reset is no longer needed.

## SD recording

Some improvements have been implemented in configuring continuous recording to an SD card.



# Release Notes

## Installing the Updated Firmware

The latest firmware is available on Vicon's website from the Software Downloads page. A link is provided below.

<http://www.vicon-security.com/software-downloads-library/vicon-camera-software/>

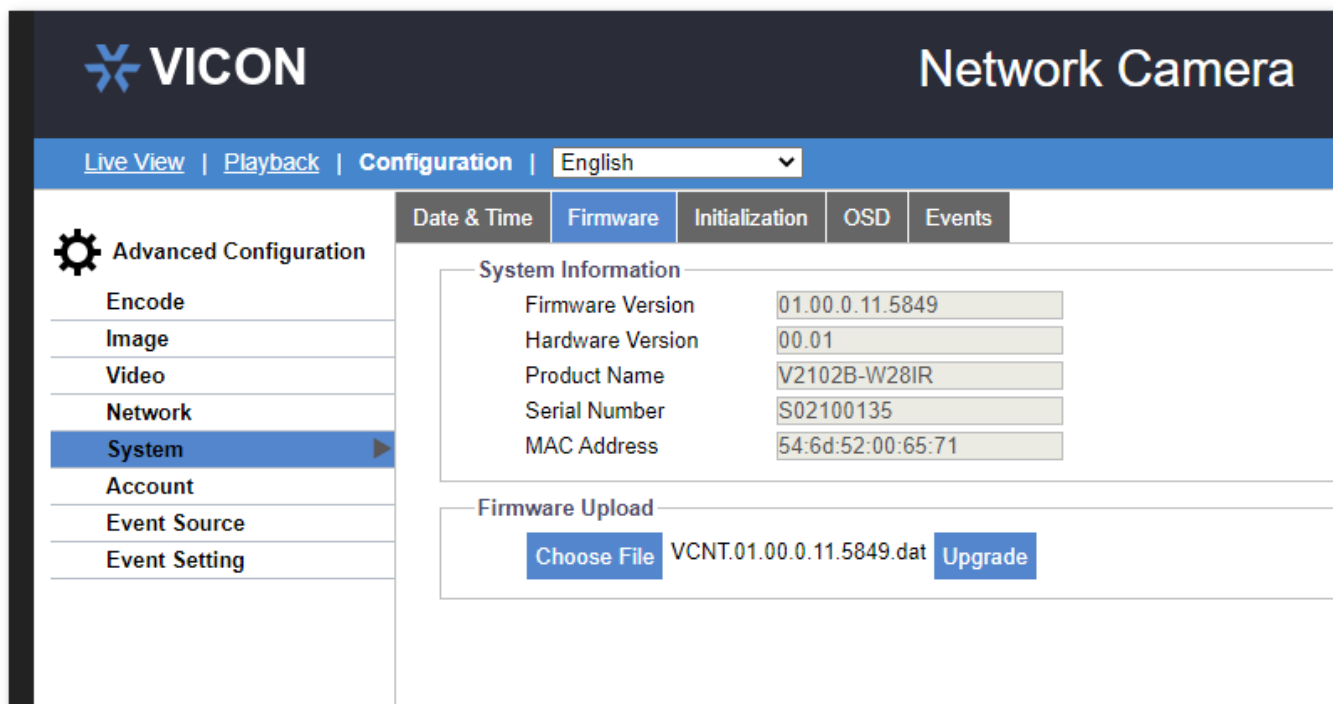
Download the firmware to your PC. Unzip the file.

There are two options to install the new firmware in the camera:

- Using web interface of the camera, uploading the firmware directly into the device.
- With PRONTO Device Manager Software that can be installed on a PC.

## Camera Web Interface

In the camera web interface, under Configuration > System > Firmware, press "Choose File" under "Firmware Upload" and select the downloaded firmware file. Then press "Upgrade" to start the update. The camera will install the update and reboot with the new firmware version:



The screenshot shows the Vicon Network Camera web interface. The top navigation bar includes 'Live View', 'Playback', 'Configuration', and a language dropdown set to 'English'. The left sidebar shows 'Advanced Configuration' with options for Encode, Image, Video, Network, System (selected), Account, Event Source, and Event Setting. The main content area has tabs for 'Date & Time', 'Firmware', 'Initialization', 'OSD', and 'Events'. Under the 'Firmware' tab, there is a 'System Information' section with the following details:

Firmware Version	01.00.0.11.5849
Hardware Version	00.01
Product Name	V2102B-W28IR
Serial Number	S02100135
MAC Address	54:6d:52:00:65:71

Below this is the 'Firmware Upload' section, which contains a 'Choose File' button, the filename 'VCNT.01.00.0.11.5849.dat', and an 'Upgrade' button.

## Using PRONTO Device Manager Software

PRONTO is Vicon's device manager tool that can be used to discover all Vicon cameras in a network. This standalone single discovery tool running on a PC, allows users to:

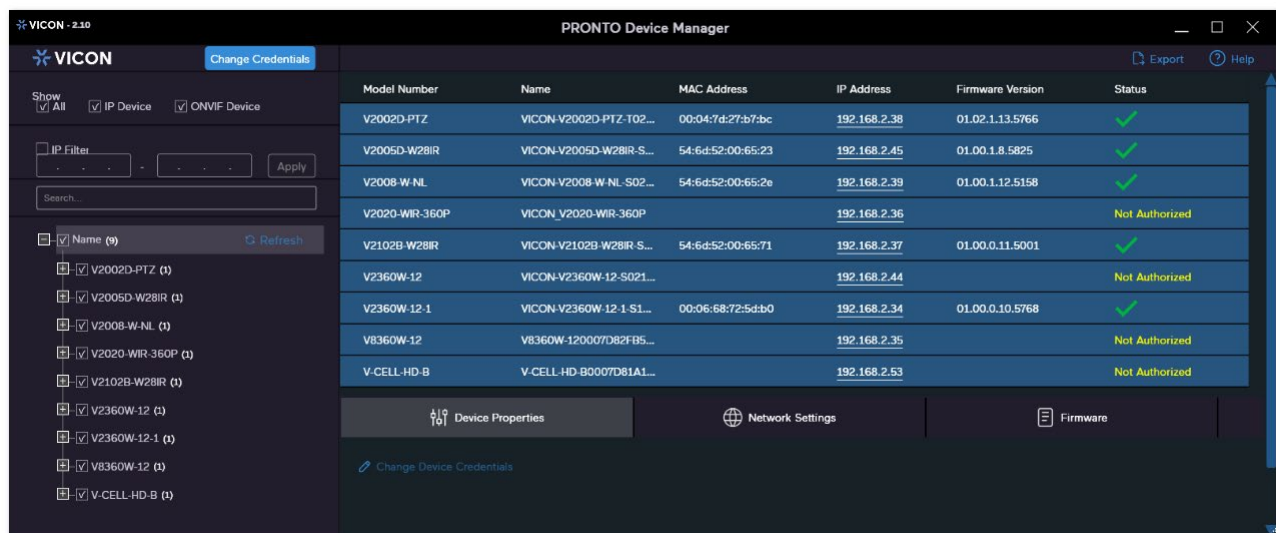
- Discover cameras
- Set up IP addresses: DHCP, manual, batch
- Configure initial passwords
- Launch camera web interface
- Upgrade firmware, single and batch, based on firmware file or device type
- Generate reports for all currently connected cameras, legacy Vicon cameras and other connected ONVIF devices

Pronto Device manager can be downloaded from Vicon's website:

<https://www.vicon-security.com/software-downloads-library/pronto-device-manager-software/>

Pronto Device manager user guide can be found here:

[https://www.vicon-security.com/wp-content/uploads/2022/08/Vicon-Pronto-Device-Manager\\_User-Guide.pdf](https://www.vicon-security.com/wp-content/uploads/2022/08/Vicon-Pronto-Device-Manager_User-Guide.pdf)



- Scan the network and find the camera model that needs a firmware update.
- Enter valid credentials for the camera that needs a firmware update.
- Select camera(s). (More cameras can be selected that use the same firmware file.)
- Press the "Upload Firmware File" button; load the new firmware into Pronto.
- Press "Upgrade Device" and select the new firmware file just loaded into Pronto.
- Press Apply. The new firmware is now uploaded to the selected camera(s).
- Allow some time for the camera(s) to reboot after the firmware is uploaded.
- Press "Refresh" and verify the camera(s) are now listed with the new firmware version.

Note: In some cases, when a new camera model is released, it may be necessary to load a new "FW definition file" into Pronto. This file establishes the correlation between the camera model and the applicable firmware file for the camera model.

When needed, this file will be made available on Vicon's website.