



SALES ALERT

The Next Evolution of Multi-Sensors



Overview

When Vicon introduced its V1000 series of multi-sensor cameras in 2020, it revolutionized how people conceptualize these cameras. With remote positioning, starlight low-light imaging and exceptional image quality, the camera delivered unparalleled value for surveillance operations across the globe.

Now Vicon is releasing the next generation of multi-sensors into our NDAA-compliant Roughneck series.

Like its predecessor, the Roughneck Multi-Sensor does the work of four cameras in a single camera network cable and license. It eliminates tedious, manual configuration through four remotely positioned 5 MP sensors. Operators can easily position each sensor from their PC rather than manually adjusting each sensor—saving users unnecessary installation and maintenance costs.

Each sensor features a powerful lens that can be positioned independently, giving users the freedom to customize their views to meet any requirement. The camera includes preset positions for 180°, 270°, 360° and users can quickly configure two custom presets of their own.

Like our other Roughneck models, the ONVIF-compliant Roughneck Multi-Sensor is certified with most major video management systems, so it can be integrated seamlessly into existing installations without any headaches.

Product at a Glance

- ▶ (4) 5MP sensors, creating a total of 20MP resolution
- ▶ Remote positioning with independent motorized PTZ control for each sensor
- ▶ Presets for 180°, 270° and 360° panoramic coverage
- ▶ Custom presets available
- ▶ Starlight low-light imaging
- ▶ IR illumination up to 131 ft (40 m)
- ▶ Edge analytics
- ▶ 120 dB True WDR

Why It's Right for You



Certified with most systems



Easy and flexible installation



Cameras from a name you can trust

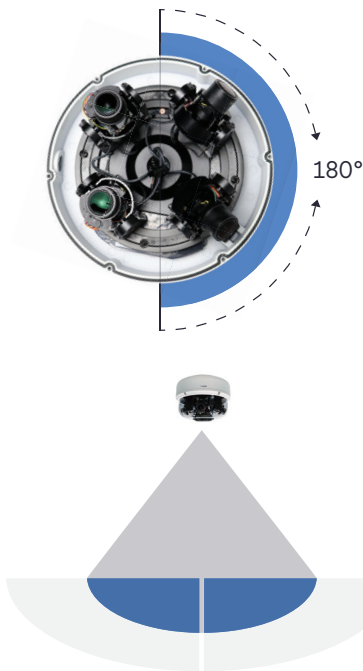
Reduce Installation Time and Frustration

The Roughneck Multi-Sensor empowers end-users and integrators to easily configure and reconfigure the field-of-view from a computer. There's no need for bucket trucks, ladders or costly on-site visits for manual configuration. With multiple presets and the ability to create custom views, users can customize the camera to meet even the toughest requirements.

Available Preset Positions

180°

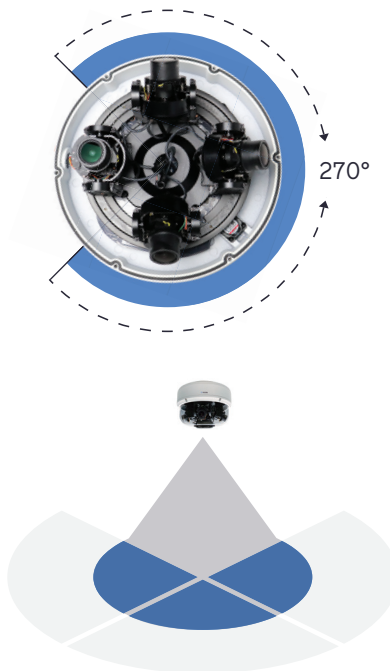
The 180° is ideal for wall mounting, providing ground coverage in applications such as courtyards, retail shops, banks and more.



There are options for 2 or 3 sensors to provide the 180° view with the remaining sensor(s) covering the blind spots below

270°

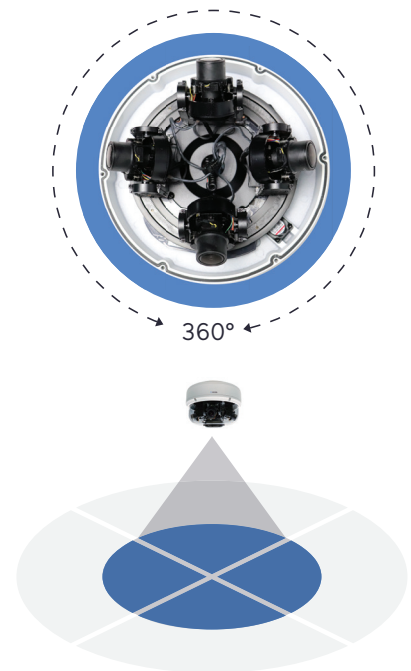
The 270° preset is ideal for applications such as building corners and airport entrances where you need complete coverage without blind spots.



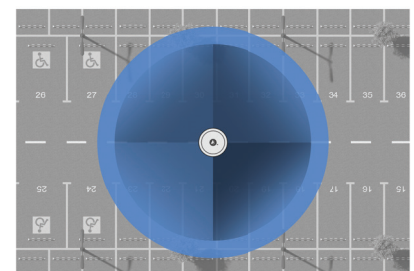
3 sensors capture your environment while 1 sensor faces down to eliminate any blind-spots below

360°

The 360° preset provides a full view of the environment and is ideal for applications such as intersections, large warehouses and more.



Position all 4 sensors to cover every aspect of the area, providing an omni-directional FOV



See Low-Light Color for Better Forensics

With starlight low-light imaging, users can get incredible color detail in low light scenes, giving them better forensic details—such as vehicle or clothing colors—when traditional cameras would show black-and-white IR images.

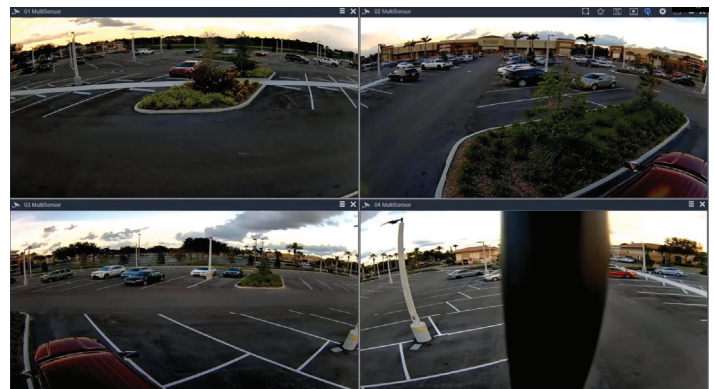
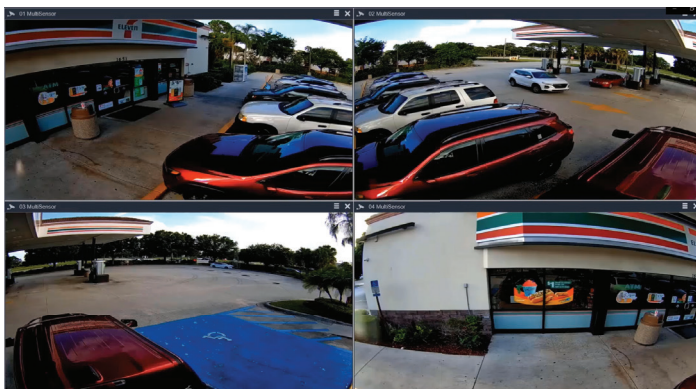


In the image above, users can see color details on the suspect whereas traditional cameras only show black-and-white.

Get Crystal Clear Imaging, Day or Night

The Roughneck Multi-Sensor is engineered to deliver clear images day or night. True WDR ensures the camera can overcome high-contrast lighting conditions during the day, while 131 ft of IR illumination ensures you can see every detail in darkness.

With four 3.1-10 mm lenses with 3.2x optical zoom, each delivering a 5 MP stream, operators see crisp details even at distance.



The V2020-WIR-360 is now available for immediate shipping.

Specifications

Model	V2020-WIR-360
Camera	
Device Type:	Indoor/outdoor multi-sensor panoramic cameras
Image Sensor:	4X 1/2.8" 5 MP CMOS progressive sensor
Max Resolution:	4X 2592 x 1944 (5 MP)
Image Settings:	WDR (Wide Dynamic Range; 120 dB). Backlight Compensation (BLC). Configurable brightness, contrast, saturation, sharpness. Mirror. Flip. White balance. Exposure. Gain Control. Privacy masks (5). Day/night, True day/night ICR. Audio. Event handler and notifications.
Video Content Analysis:	Video Motion Detection (VMD; 5 areas); Tampering; Intrusion; Line Counting/Crossing; Area Counting; Museum Search
Electronic Shutter Speed:	1/7 - 1/20000 sec
Day/Night Performance:	True Day/Night with mechanical IR cut filter
Wide Dynamic Range (WDR):	120 dB, true
IR Sensitivity:	Up to 131 ft (40 m) @ IEEE802.3bt
Minimum Illumination (@30 IRE):	Color: 0.03 lux; BW: 0.01 lux, IR Off; 0 lux, IR On
Adjustment:	Remotely adjustable: Pan: 360°; tilt: 90°; each module can be positioned remotely along a track
Lenses	
MFZ Lens:	4X 3.1-10 mm; 3.2X optical zoom
Angle of View:	Horizontal 32° (tele) - 96° (wide)/Vertical 24° (tele) - 69° (wide)/Depth 40° (tele) - 124° (wide)
Network Video Transmission	
Network:	10/100/1000 Mbps Ethernet; RJ-45
Image Compression:	H.265/H.264; M-JPEG
Streaming:	Triple streaming
Max. Frame Rate:	Up to 30 fps at 20 MP
Audio:	Two-way audio: 1 audio input, 1 audio output; G.711 8 KHz/8 bits
Protocols:	IPv4/IPv6; TCP/IP; UDP; ICMP; SNMP v2c/v3; HTTP; RTP; RTSP; RTCP; SMTP; HTTPS; UPnP; FTP; SSL; DNS; NTP; QoS; LDAP (client); DynDNS; Zeroconfig; ONVIF S, G, Q, T
Users:	Up to 10 clients
Web Browser:	Internet Explorer®/Mozilla® Firefox®/Google Chrome®
Alarms:	1 alarm input/1 alarm output
Security:	Password protection, IP address filtering, HTTPS, IEEE 802.1X network access control; ONVIF S/G/Q/T
Mechanical and Electrical	
Pan/Tilt Range:	Remote adjustment: Pan: 360°; Tilt: 90° (Default value 83°)
Construction:	Die-cast aluminum housing; polycarbonate dome
Mounting:	Surface-mounted; mounting holes provided; includes mounting cap. Mounting options available.
Controls and Connectors:	I/O cable assemblies supplied for power, audio (2X) and Alarms. PoE/Network: RJ-45. Alarm In/Out: terminal blocks. Power: 2-pin terminal block. Audio In/Out: phone jacks. SD card (2X).
Dimensions:	H: 5.6 in. (142.3 mm); Diam: 9.7 in. (247.5 mm)
Weight:	7.55 lb (3.425 kg)
Input Power:	PoE++ (IEEE 802.3bt Class 5); 24 VDC; 24 VAC
Current:	1.7 A
Power Consumption:	PoE++: 40 W

Specifications (cont'd)

Model	V2020-WIR-360
Environmental	
Operating Conditions:	Temp: -40° to 131° F (-40° to 55° C) IR off. Humidity: 10% - 90%, non-condensing.
Approvals:	FCC Class A, CE; IP66, IK10; UL
Warranty:	3 years
Country of Origin:	Taiwan

Product Descriptions and Pricing

Model Number	Product Code	Resolution/Description
Camera		
V2020-WIR-360	10517-20	MULTI-SENSOR CAMERA; 20 MP; 360° coverage; four 5MP image sensors; smart IR; four motorized. 3.1-10 mm lenses; H.264/H.265; true WDR
Accessories		
V1001-WM	10488-05	WALL MOUNT; for use with V1000 and V2000 series multi-sensor cameras
V1001-PM	10488-15	PENDANT MOUNT; for use with V1000 and V2000 series multi-sensor cameras
V1001-ADAPT	10488-25	ADAPTER PLATE; used when mounting the wall mount to the V-20B-A-4 pole mount or V-24CMB-4 corner mount bracket
V-24CMB-4	10476-49	OUTSIDE CORNER MOUNT BRACKET; for corner mounting with a wall mount
V-20B-A-4	10476-48	POLE MOUNT ADAPTER; for 4-10 in. diameter poles; painted aluminum construction, includes mounting straps; for pole mounting with a wall mount;
VPOE-INJ-60	10193-10	POE MIDSPAN INJECTOR; 60W; required for use for PoE++ for full IR distance of 131 ft (40M)
V2000-360-ICD	10517-50	DROP CEILING IN-CEILING MOUNTING KIT; for the V2020-WIR-360-360 Dome
SVFT-UPM-2	10476-20	UNIVERSAL PARAPET MOUNT



V1001-WM
Wall
Mount



V1001-PM
Pendant
Mount



SVFT-UPM-2
Universal Parapet
Mount



V1001-ADAPT
Adapter
Plate



V-24CMB-4
Outside Corner
Mount Bracket



V-20B-A-4
Pole Mount
Adapter



VPOE-INJ-60
POE Midspan
Injector



V2000-360-ICD
In-Ceiling-Drop
Mounting Kit

Please contact your regional sales representative or visit vicon-security.com for more information.