

# IP Search Utility Quick Guide

## Discovery Tool for Thermal Camera Series

XX300-70-00



Document Number: 8009-8300-70-00

Product specifications subject to change without notice. Issued:

10/2021 Copyright © 2021 Vicon Industries Inc.

All rights reserved.

Vicon Industries Inc.

Tel: 631-952-2288

Fax: 631-951-2288

Toll Free: 800-645-9116

24-Hour Technical Support:

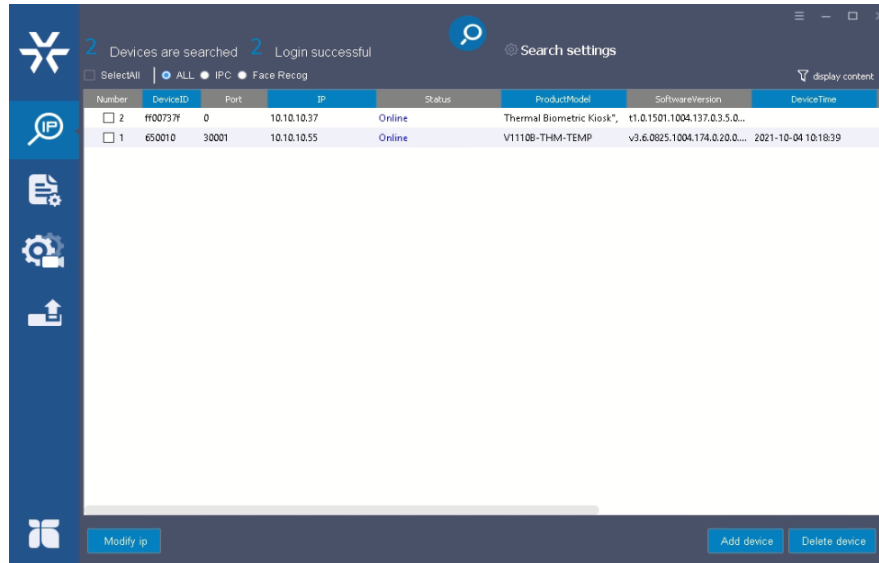
800-34-VICON (800-348-4266) UK:

44/(0) 1489-566300


## Installation

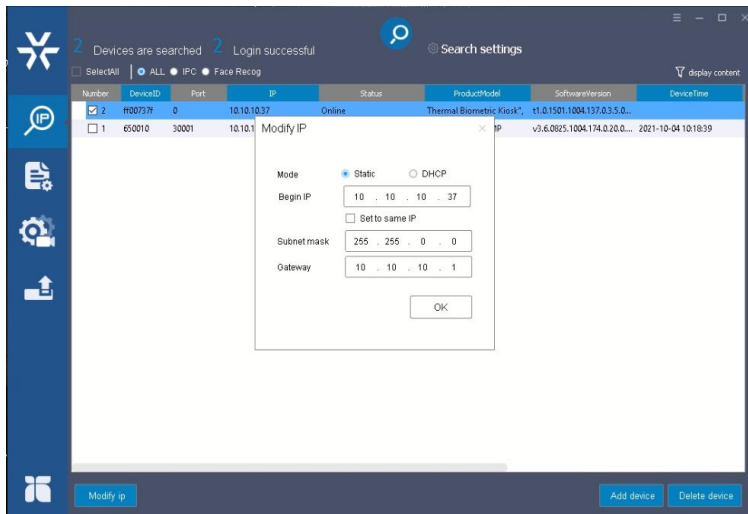
IP Search is a utility program that helps users locate Vicon thermal camera(s) in the local area network that the computer is connected to. To install and use the utility program, follow the steps below.

1. The latest IP Search tool can be found on Vicon website's [Camera Software Download](#) page. Download the IP Search folder to your local computer.
2. Double click on IPSearch.exe in the IP Toolbox's folder to install the IP Search software. Double click IP Search window and the software will pop up.



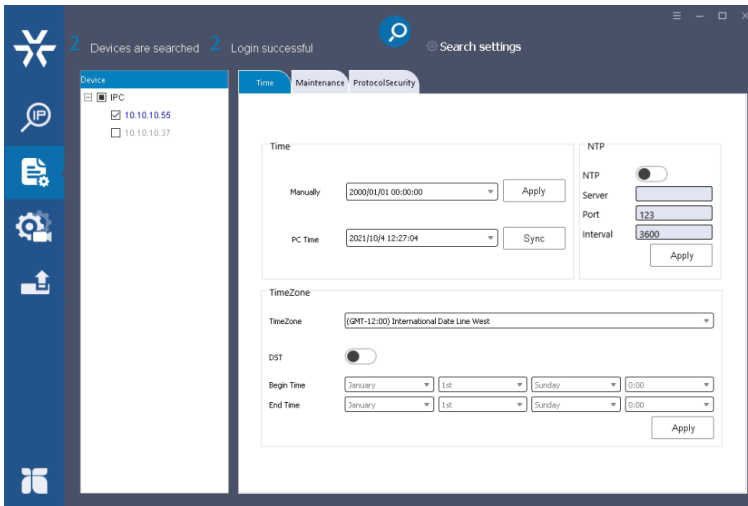
IP Search

3. Click the search icon  to find all the camera(s) currently in operation. Click the camera in the list for which you want to configure the network settings.
4. Configure the following settings as needed.
  - a. **Network Settings:** Click "Modify ip" at the left bottom. If you have a DHCP server on your network to assign IP addresses to network devices, click the "dhcp" option and click "OK." If you don't have a DHCP server, select "Static" to manually enter the values for IP Address, Subnet Mask and Gateway fields.



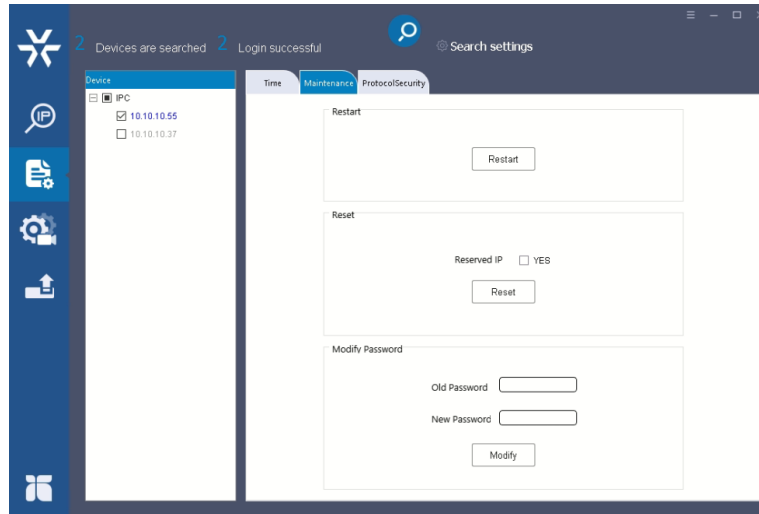
IP Modification

- b. **Camera Time** (works for Thermal Bullet and Body Temperature cameras only): Click “Sync” to synchronize the camera time to the PC that the camera is connected to; otherwise manually enter the time in “Manually” mode and click “Apply.” NTP (Network Time Protocol) allows the user to synchronize the camera time and the local PC time. Click the button on the right to enable the NTP setting. Enter the server IP address and port number of the local host that is connected to the camera in those fields. Interval is the time interval of time synchronization between the camera and local host, in milliseconds. Enter the TimeZone of the local host. Enabling “DST” allows user to use “Daylight Savings Time” mode. Select the time frame and click “Apply.”



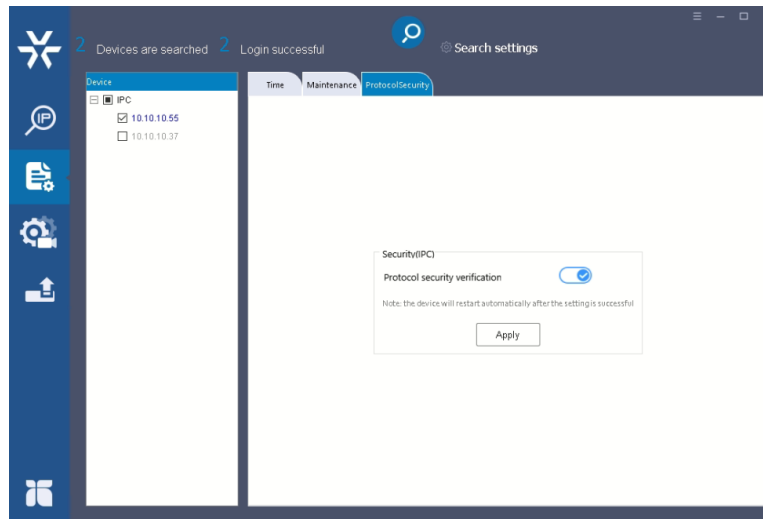
Camera Time Modification

- c. **Camera Maintenance** (works for Thermal Bullet and Body Temperature cameras only): Click “Restart” to reboot the camera. Click “Reset” to return the camera to factory defaults. If the camera IP address is needed, select “Reserved IP” to “YES.” Change password if needed and click “Modify.”



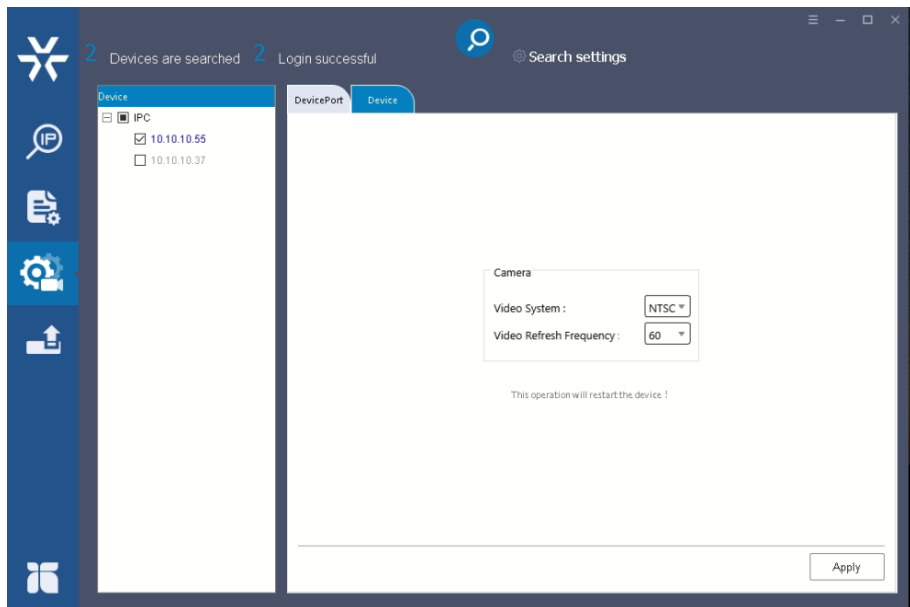
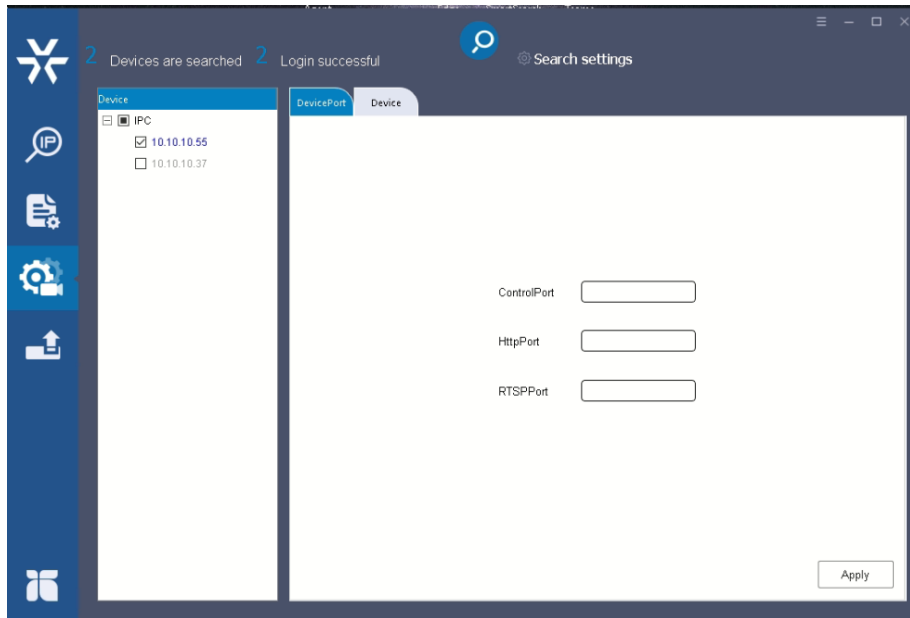
Camera Maintenance Window

- d. **Protocol Security** (works for Thermal Bullet and Body Temperature cameras only): Click “Protocol security verification” to enable the camera to verify the camera’s security protocol. Click “Apply.”




Protocol Security Window

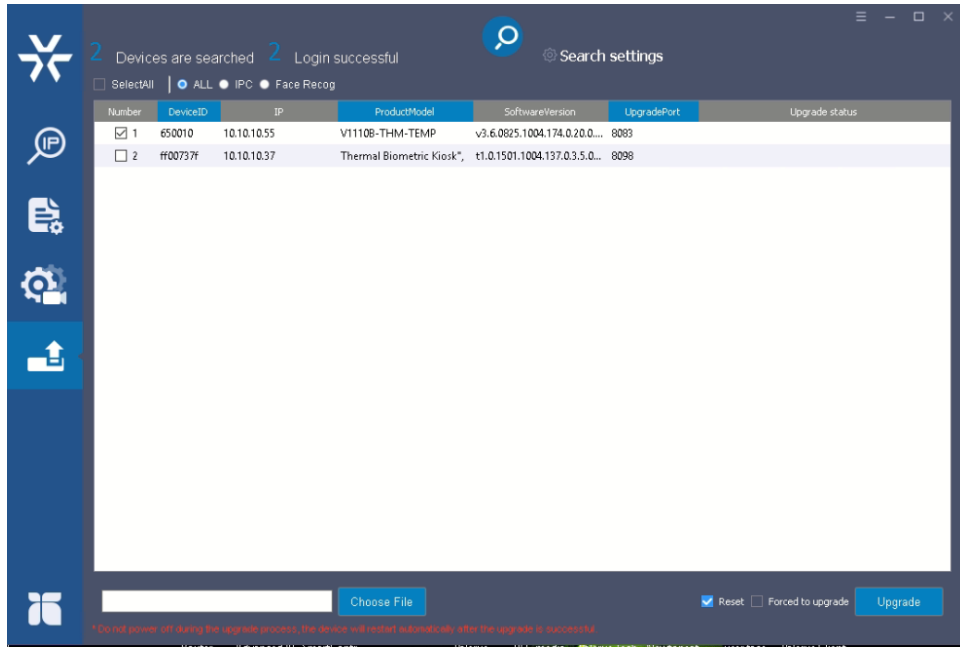
- e. **Device Port and Device** (works for Thermal Bullet and Body Temperature cameras only): Enter the Port information and click “Apply.” Select if the camera is using “NTSC” or “PAL” and click “Apply.”



Device Port and Device Window

- f. **Firmware Upgrade:** Select a camera or click “Select All” button to select a camera or all the cameras on the firmware upgrade list, respectively. Enter the path for the desired firmware or click and then follow the instructions to find and upload the firmware file.

When the process is complete, click  again to return to the list of all cameras located in the local network.



Firmware Upgrade Window



VICON INDUSTRIES INC.

For office locations, visit the website: [vicon-security.com](http://vicon-security.com)

