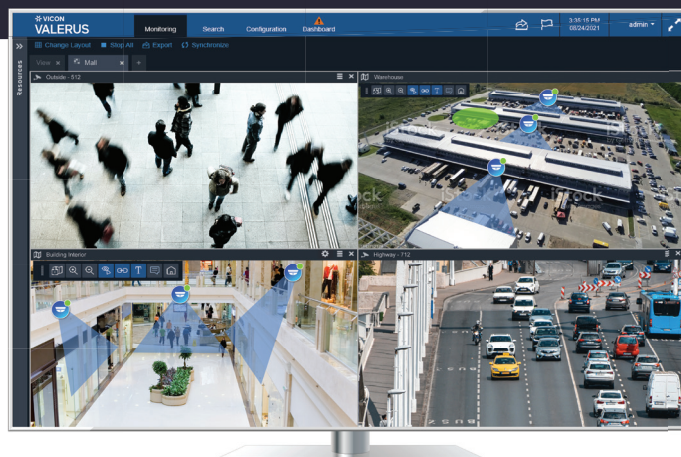


## SALES ALERT

# Introducing Valerus Version 21.1

The next major expansion of Vicon's acclaimed Video Management System (VMS) is now available. Widely considered one of the easiest VMS platforms to install and use, Valerus 21.1 adds and optimizes features, such as sophisticated alarms management options, newly added integration framework, improvements to our renowned health dashboard and more, that are strategically added to attain our goal of being the go-to VMS.

Read below and discover how this new version will improve your security operation and remember, if you're a current user of Valerus, these new features will automatically be enabled once downloaded if you have an active Upgrade Protection Plan (UPP).

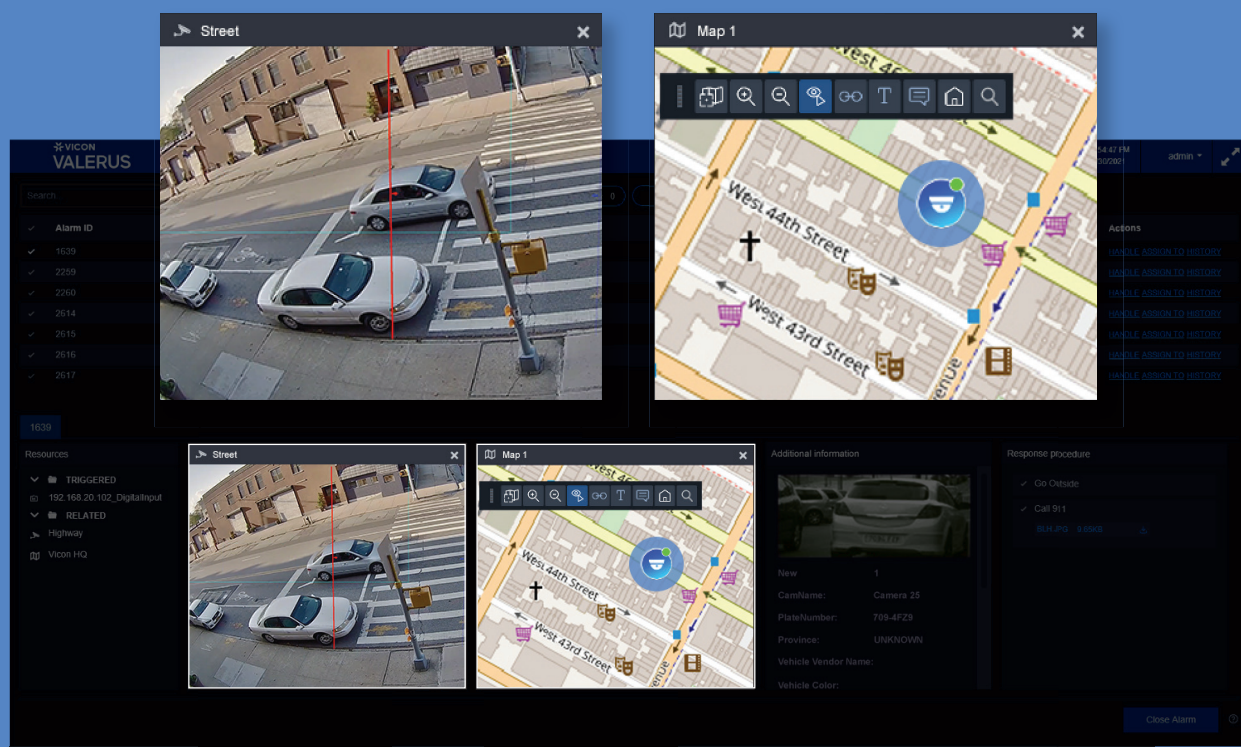


## Alarms Management Suite

In highly active systems, operators can often dismiss frequent alarms, potentially affecting the evaluation of critical events. Valerus 21.1 not only improves the monitoring of alarms, but also ensures consistent procedures and timely responses.

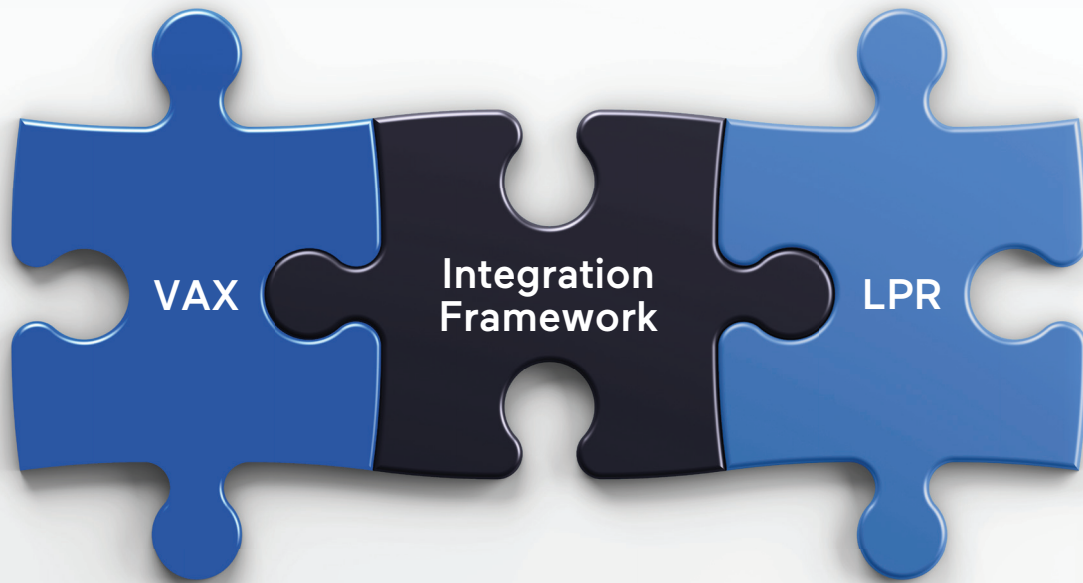
The Alarms Management Suite features an intuitive interface designed so operators and security managers can have a centralized location to view all alarms at once. Via this window, they have immediate insight of captured event footage for visual verification and can view additional resources, such as neighboring cameras or access control points for detailed forensic investigations.

This comprehensive suite also empowers admins and operators to define alarms by priority and assign alarms to specific Valerus users. This streamlines the investigation procedure, ensuring accountability and consistent follow-through.



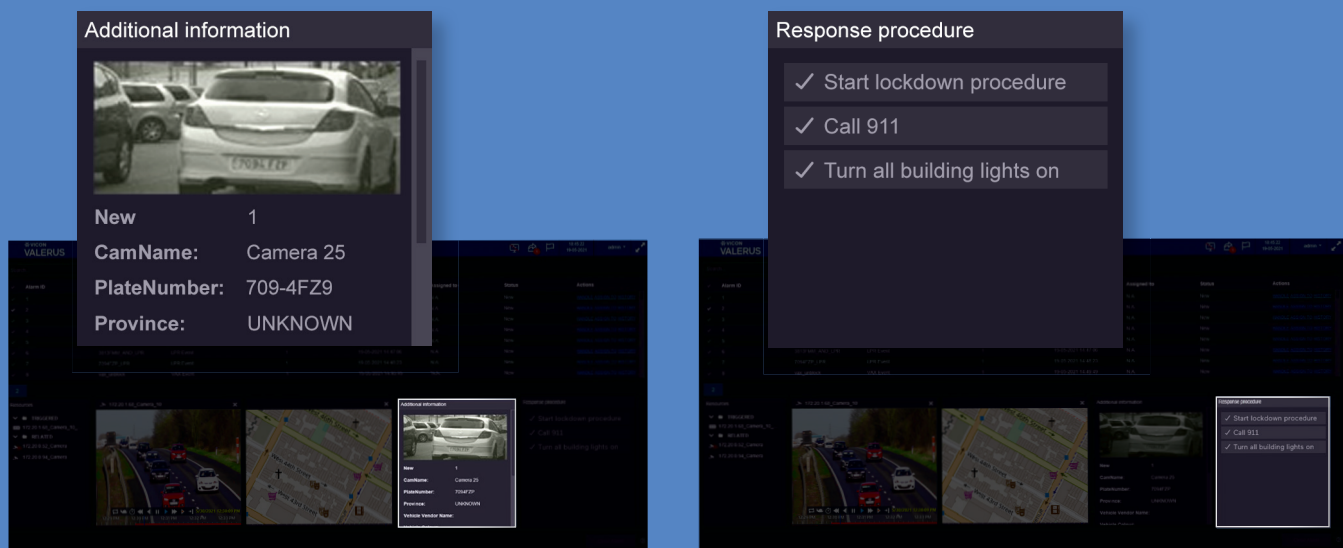
## Remarkable Integration Framework

After careful research and advanced design, Valerus 21.1 now features an integration framework designed to expand Valerus' functionality through third-party integrations. With this release, the framework includes new partnerships designed to improve response times, expedite investigations and centralize management of said critical events. These partnerships include cutting-edge License Plate Recognition (LPR) software developed by Neural Labs and a deep integration with our VAX Access Control platform. While these are the first of many valuable partners, they can both be leveraged as powerful tools in enhancing and handling surveillance procedures.



## LPR Integration

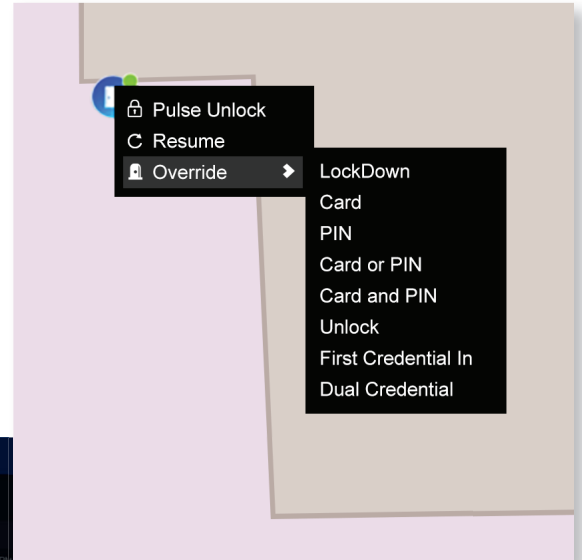
The addition of LPR as our first partner is strategically implemented to deliver immediate insight and real-time information of wanted and unwanted vehicles on the premises. We explicitly chose to partner with Neural Labs due to their advanced comprehension, successful implementations and development of vehicle recognition software. This partnership stores LPR events, allowing users to tag, search and export like any other native event within Valerus. Not only can users link LPR sensor data to the corresponding video channel, but they can also add it to our interactive geo-mapping tool for a more visual representation of their security operation. Users can also trigger alerts and alarms based on LPR events, so operators can react appropriately.



## VAX Access Control Integration

Our new and enhanced VAX Access Control partnership allows users to review, control and execute access control procedures right from Valerius. Now users can monitor events by using Valerius' Event Search tool, create alarms or alerts and execute actions for critical events all from one platform, eliminating the need of a separate access control window. This ensures operators can react and quickly and investigate thoroughly, unifying the way critical events are handled. Users can also access interactive mapping features, creating an intuitive visual of both surveillance cameras and VAX-controlled doors – all on a single map. In the event of a crisis, this helps manage and execute actions, such as a door override, lock/unlock and more, for immediate and swift action.

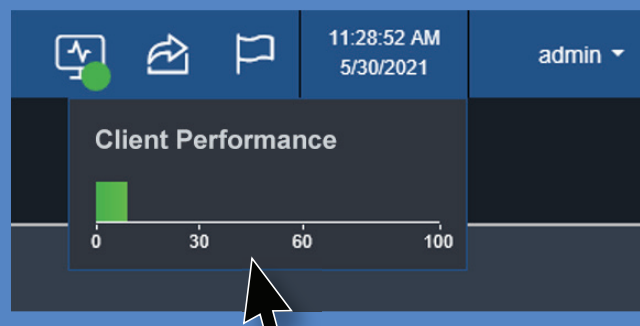
The screenshot displays the Valerius VAX Access Control interface. At the top, there's a navigation bar with tabs for Monitoring, Search, Configuration, VAX, Dashboard, and Alarms. Below this is a search bar and filters for New (0), Escalated (0), Assigned to me (0), and Selected (3). The main area shows a table of alarms with columns for Alarm ID, Alarm Name, Alarm (Event type, detection code, location), Priority, and Time. The table lists several 'VAX Demo Access Denied' events. Below the table, there's a 'Resources' section with a tree view showing 'VAX Demo2 Door' and 'Front Door'. A map titled 'Map 1' shows the location of the 'Front Door'. On the right, a detailed view of an event shows a photo of a person, the event type 'Access Denied - Invalid Card', the door name 'VAX Demo2 Door', and a message 'Helen Lai Denied Access to VAX Demo2 Biometric Reader due to Invalid Card or Pin with'. A 'Response procedure' section lists actions like 'Dial 911' and 'Turn Electricity Off'.



## Client Performance Indicator Icon

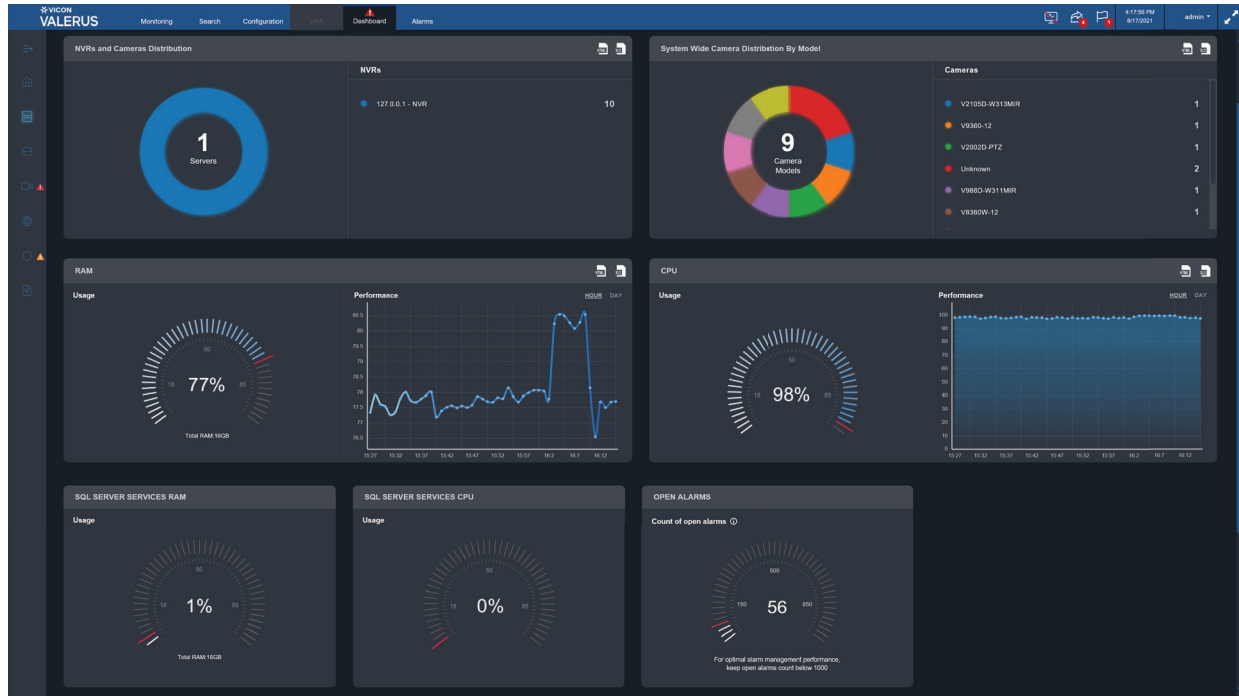
When monitoring critical infrastructures and facilities, operators are pressed for time and need to access system performance information rapidly. With ever-increasing demands of higher resolution, image dewarping, analytic graphics and multiple monitors, it's easy to inundate a client station's performance capacity.

The newly developed Client Performance Indicator Icon is a resourceful tool that allows users to view the performance of their system in a simple glance, at all times. With this tool, operators can immediately identify if resources are becoming overloaded and severely impacting the efficiency of their system. This proactive tool ensures operators catch potential issues before they become critical failures.



## A Renowned Health Dashboard That Keeps Getting Better

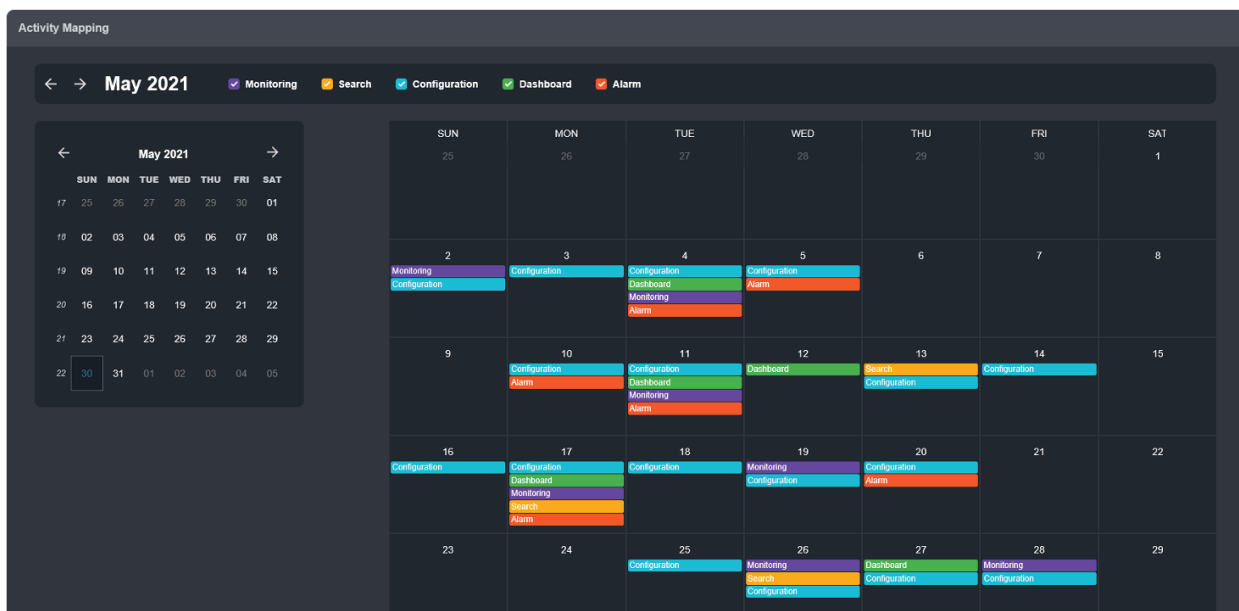
As video management systems become more critical to any organization, monitoring the full spectrum of performance metrics and operational status is an absolute must. System performance and cyber security are vital parts of the system's core functions, but how are they managed in such complex systems? Valerus 21.1 expands upon existing capabilities and guides users in understanding their system's overall capacities, monitor maintenance and ensure uninterrupted surveillance.



## Updated Modules

### New! Activity Mapping Tab

This tab simplifies user-activity monitoring of your entire Valerus system. Designed in an easy-to-read calendar format, this tool organizes information and allows users to select audit log activities of their interest, such as configuration changes, alarms and more.





## Updated Modules (cont'd)

### Open Alarm Gauge

This is intended to provide users with a snapshot of the number of open alarms that are not assigned or handled. This helps admins and operators quickly discern if alarms are being handled in a timely manner and develop better processes.

### Video Export Space

When critical events occur, the reviewing and distribution of crucial footage is an essential element of any investigation. This feature ensures users are aware of what their export space is and if they can still do exports while using other features.

### NVR Tab

New S.M.A.R.T. communication shows errors reported by the hard drives, helping operators detect potential drive failures before they lead to potentially catastrophic events.

### Enhanced Cyber Security Tab

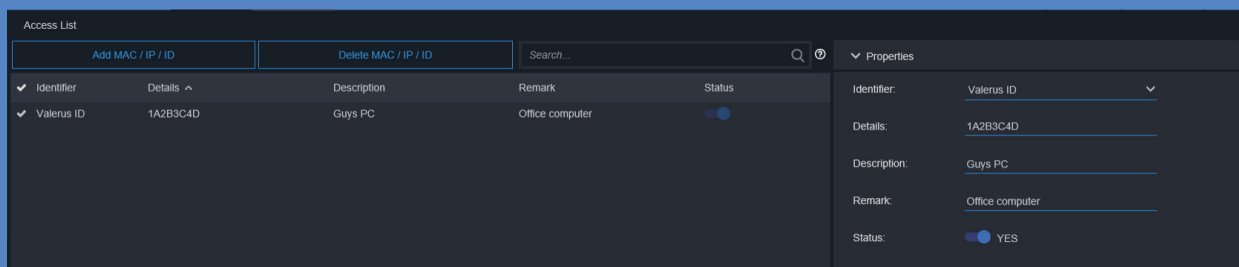
This now features enhanced details and notifications of user status, designed to deter the sharing of credentials and false login attempts that help operators effectively monitor who is in the system and at what time. An additional notice of default password use minimizes the easiest way to gain unauthorized access and prevent potential system hacking or entry.

### Report Export Options

New options to download historical performance data in HTML or Excel formats provides the ability to easily share data and extract any necessary reporting.

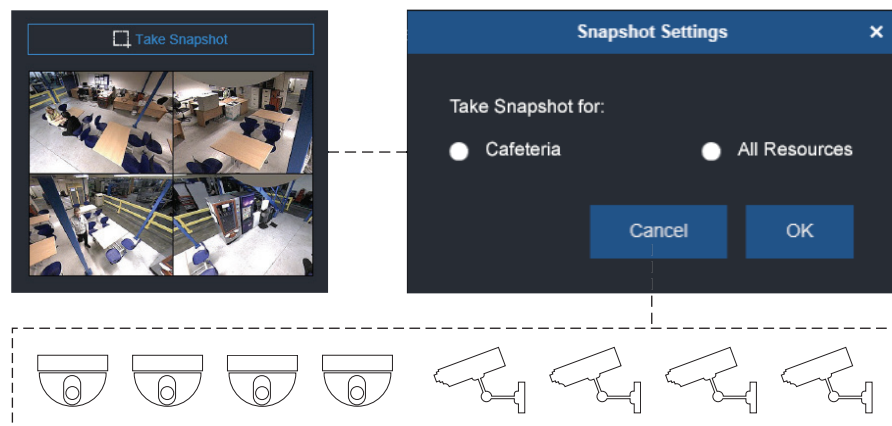
## Access List:

Create the ultimate line of protection with your Valerus system by identifying and adding specific devices to your network. These devices can be added either by IP address, MAC address or via a unique ID generated exclusively for Valerus. This extra layer of protection allows users to decide who can access Valerus and avoids potential system shutdown due to unauthorized access.



## Enhanced Snapshot Tool:

Designed with integrators and operators in mind, users can take reference snapshots of all cameras with just one single click. This essentially facilitates access to all cameras and eliminates the need to tediously take individual snapshots and confirm all cameras are set for optimal field-of-view.



## Tier Comparison Chart

### Simple and Cost-Effective Licensing Tier Options to Meet Your Specific Needs

The Valerus software is provided for download on Vicon's website. Valerus has centralized licensing; a single license code activates all components. The key to activating the software is determined by the license type selected; each license is per edge device (with a single IP address), regardless of the number of channels that device provides. Refer to the Valerus Tier Features table.

The table below provides an in-depth comparison outline of the features and capabilities included in the range of Valerus VMS license tiers. **A no-cost tier for trial systems and fully functional demos is available (TRY version).**

	CORE	PRO	ENTERPRISE
GENERAL OPERATIONAL PARAMETERS			
Maximum number of devices per system	35	Unlimited	Unlimited
Maximum number of simultaneous clients	10	Unlimited	Unlimited
Maximum number of recording days	Unlimited	Unlimited	Unlimited
Museum Search	-	Yes	Yes
Microsoft Active Directory support	-	Yes	Yes
Support analog HD video (AHD)	Yes, w/Valerus encoder	Yes, w/Valerus encoder	Yes, w/Valerus encoder
Alarms Tab	-	Yes	Yes
Support GEO Map	-	-	Yes
Snapshot	Yes	Yes	Yes
Dashboard	Yes	Yes	Yes
Audit Log	-	Yes	Yes
Integration with 3rd party applications	-	-	Yes

### Evaluate the power and simplicity of Valerus 21.1.

If you're a current user of Valerus, these new features will automatically be enabled once downloaded, regardless of UPP status.

Available for Immediate Download

Please contact your regional sales rep to request a free demo or visit [vicon-security.com](https://vicon-security.com) for more information.

## Software Licensing Tiers

VALERUS SOFTWARE LICENSES	MODEL NUMBER	MSRP PRICE
Valerus CORE device connection license; one license per device (regardless of number of channels on device); for systems with up to 35 Vicon edge devices	VLR-VCORE-LIC	\$56
Valerus CORE device connection license; one license per device (regardless of number of channels on device); for systems with up to 35 third party edge devices	VLR-CORE-LIC	\$95
Valerus PRO device connection license; one license per device (regardless of number of channels on device); for systems with unlimited Vicon edge devices	VLR-VPRO-LIC	\$111
Valerus PRO device connection license; one license per device (regardless of number of channels on device); for systems with unlimited third party edge devices	VLR-PRO-LIC	\$165
Valerus ENTERPRISE device connection license; one license per device (regardless of number of channels on device); for systems with unlimited Vicon edge devices	VLR-VENT-LIC	\$170
Valerus ENTERPRISE device connection license; one license per device (regardless of number of channels on device); for systems with unlimited third party edge devices	VLR-ENT-LIC	\$255

### Valerus Version Upgrades

MODEL	PRODUCT CODE	DESCRIPTION	MSRP
VLR-VCORE-VER	10456-30	VERSION UPGRADE FOR VALERUS SOFTWARE; to next version; CORE tier; per Vicon device	\$22
VLR-CORE-VER	10456-20	VERSION UPGRADE FOR VALERUS SOFTWARE; to next version; CORE tier; per third party device	\$38
VLR-VPRO-VER	10456-35	VERSION UPGRADE FOR VALERUS SOFTWARE; to next version; PRO tier; per Vicon device	\$44
VLR-PRO-VER	10456-25	VERSION UPGRADE FOR VALERUS SOFTWARE; to next version; PRO tier; per third party device	\$66
VLR-VENT-VER	10456-91	VERSION UPGRADE FOR VALERUS SOFTWARE; to next version; ENT tier; per Vicon device	\$68
VLR-ENT-VER	10456-90	VERSION UPGRADE FOR VALERUS SOFTWARE; to next version; ENT tier; per third party device	\$102

### Valerus Tier Upgrades

MODEL	PRODUCT CODE	DESCRIPTION	MSRP
For Devices with a UPP			
VLR-VCORE-PRO	10457-10	TIER UPGRADE FOR VALERUS SOFTWARE; from CORE to PRO; Vicon devices; when purchased with current UPP; per device	\$55
VLR-CORE-PRO	10457-00	TIER UPGRADE FOR VALERUS SOFTWARE; from CORE to PRO; third party devices; when purchased with current UPP; per device	\$121
VLR-VCORE-ENT	10457-25	TIER UPGRADE FOR VALERUS SOFTWARE; from CORE to ENT; Vicon devices; when purchased with current UPP; per device	\$114
VLR-CORE-ENT	10457-20	TIER UPGRADE FOR VALERUS SOFTWARE; from CORE to ENT; third party devices; when purchased with current UPP; per device	\$160
VLR-VPRO-ENT	10457-35	TIER UPGRADE FOR VALERUS SOFTWARE; from PRO to ENT; Vicon devices; when purchased with current UPP; per device	\$59
VLR-PRO-ENT	10457-30	TIER UPGRADE FOR VALERUS SOFTWARE; from PRO to ENT; third party devices; when purchased with current UPP; per device	\$90
For Devices without a UPP			
VLR-VCORE-PRO-NP	10457-15	TIER UPGRADE FOR VALERUS SOFTWARE; from CORE to PRO; Vicon devices; when purchased without current UPP; per device	\$88
VLR-CORE-PRO-NP	10457-05	TIER UPGRADE FOR VALERUS SOFTWARE; from CORE to PRO; third party devices; when purchased without current UPP; per device	\$194
VLR-VCORE-ENT-NP	10457-45	TIER UPGRADE FOR VALERUS SOFTWARE; from CORE to ENT; Vicon devices; when purchased without current UPP; per device	\$182
VLR-CORE-ENT-NP	10457-40	TIER UPGRADE FOR VALERUS SOFTWARE; from CORE to ENT; third party devices; when purchased without current UPP; per device	\$256
VLR-VPRO-ENT-NP	10457-55	TIER UPGRADE FOR VALERUS SOFTWARE; from PRO to ENT; Vicon devices; when purchased without current UPP; per device	\$95
VLR-PRO-ENT-NP	10457-50	TIER UPGRADE FOR VALERUS SOFTWARE; from PRO to ENT; third party devices; when purchased without current UPP; per device	\$144

Please contact your regional sales representative or visit [vicon-security.com](https://vicon-security.com) for more information.