

## SALES ALERT

# Introducing our Cruiser SN673V-C



VICON

We're proud to announce our latest camera, the Cruiser SN673V-C PTZ camera. This camera is a direct replacement of our popular Cruiser SN673V-B.



The Cruiser series has been a staple in our camera line for years, known for its unparalleled reliability, extreme durability and exceptional performance. This upgraded camera leverages the same reliable, vandal-proof form factor—allowing you to use the existing mounting options—while upgrading the hardware for today's security demands. The new series is currently shipping and the SN673V-B series is now end of life.

The SN673V-C boasts several upgrades to improve your surveillance operation. Unlike its predecessor, this powerful PTZ camera features **H.265 smart encoding** to intelligently compress video streams to reduce storage and bandwidth costs. The camera now supports **quad streaming** and features our **standard analytics** package, making this camera a more intelligent option in every sense of the word.

Like its predecessor, the SN673V-C still excels in the most demanding surveillance applications. With **20x optical zoom** and motorized PTZ functionality, these cameras are ideal for covering large areas while delivering exceptional zoom quality and detail. The **autoiris lens** combined with **true WDR** maintains unprecedented video quality, day or night—even in high contrast or other tough lighting scenarios. Also like its predecessor, the SN673V-C is highly rated for weather and impact, so you can rely on the camera even in the most demanding environments.

## Side-by-Side Comparison

Cruiser SN673V-B	<b>NEW</b> Cruiser SN673V-C
2 MP day/night camera	2 MP day/night camera
20x optical zoom / 16x digital zoom	20x optical zoom / 16x digital zoom
H.264 compression	<b>H.264/H.265 compression</b>
True WDR (120 dB) day and night	True WDR (120 dB) day and night
Video content analysis: tampering, object detection function and defog	<b>Video content analysis: tampering, intrusion detection, intelligent motion, museum search, defog</b>
Triple-streaming video	<b>Quad-streaming video</b>
IP66 and IK10 rated	IP66 and IK10 rated
ONVIF (Profile-S) compliant	ONVIF (Profile-S) compliant

While we are prioritizing moving our camera lines to NDAA compliance, these cameras do not currently meet these requirements, so it should not be offered for federal opportunities.

## Specifications

Model	SN673V-C
Image Sensor:	1/1.7-inch progressive scan Sony Starvis CMOS
Max Resolution:	2MP (1080p)
Image Settings:	Digital image effects: flip, defog. DIS (Digital Image Stabilization). Configurable brightness, contrast, high sensitivity. White balance. Backlight control (BLC); HLC. Digital zoom. Exposure control. Electronic shutter speed. Day/night mode. Privacy masks (16). Motion Detection (16 areas: 8 include, 8 exclude). Dynamic Noise Reduction (2DNR/3DNR). Event notification.
Video Content Analysis (VCA):	Tampering, Intrusion Detection, Intelligent Motion. Museum Search. Defog.
Electronic Shutter Speed:	1 ~ 1/30,000 sec
Day/Night Performance:	True day/night (IR cut filter)
Wide Dynamic Range (WDR):	True WDR (120 dB)
Minimum Illumination:	Color: 0.2 lux @ 50 IRE; B/W: 0.01 lux @ 50 IRE
<b>Lenses</b>	
Focal Length:	4.7 - 94 mm (20X optical zoom); 16X digital zoom
Max. Aperture:	f/1.6 - f/3.0
Iris:	Autoiris
Zoom/Focus Adjust:	Motorized focus and zoom
Horizontal Field of View:	3° - 55.5°
<b>Network Video Transmission</b>	
Network:	10Base-T, 100Base-TX, RJ-45
Image Compression:	H.265/H.264 and M-JPEG
Resolution:	1920×1080 (1080P), 1440×1080, 1280×1024/720, 1024×768, 800×600/480, D1, 640×480, 400×240, CIF
Protocol:	IPv4/IPv6, TCP/IP, HTTP, HTTPS, RTSP, RTCP, RTP, DHCP, FTP, uPnP, UDP, ARP, QoS, Zeroconf, Bonjour, ONVIF
Frame Rate:	Max. 30 fps (25 fps, PAL)
Streams:	Quad stream (3x H.265/H.264 and 1 x MJPEG)
Users:	Live viewing for up to 10 clients; playback for up to 3 clients
Web Browser:	Internet Explorer®; Safari®, Firefox®, Google Chrome®
Security:	IP address filtering, HTTPS encrypted data transmission, SSL, password protection, multi-user authority
Local Recording:	Micro-SD slot provided; customer supplied SDHC/SDXC card
<b>Mechanical and Electrical</b>	
Construction:	Aluminum base; polycarbonate dome bubble; tamperproof screws
Pan Range:	360° continuous pan
Pan Speed:	380°/second maximum
Tilt Range:	100° (-10° to 90°)
Tilt Speed:	380°/second maximum
Presets:	256
Tours/Pattern:	8/8
Alarm:	4 alarm inputs; 1 alarm output
Audio Capability:	Two-way audio; G.711 compression
Mounting:	Mounting accessories available for wall, pendant and in-ceiling installations

## Specifications continued

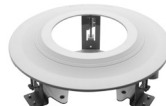
Model	SN673V-C
<b>Mechanical and Electrical</b>	
Dimensions:	6.1 in. (154 mm) (Diam) x 5.9 in. (150 mm) (H), 4.3 in. (110 mm) (Dome diam)
Weight:	3.5 lb (1.6 kg)
Input Power:	PoE; 24 VAC; 12 VDC
Current:	250 mA @ PoE; 1 A @ 24 VAC/12 VDC
Power Consumption (IR on):	PoE: 12 W; 24 VAC/12 VDC: 12 W
<b>Controls and Connectors</b>	
Connectors:	Power: 12 VDC DC jack; Network/PoE: RJ-45 CAT 5; Alarm In (4)/Out (1): screw terminal; SDHC/SDXC Card Slot; Audio In and Out: RCA jack (Audio Out requires external amplifier)
<b>Environmental</b>	
Operating Conditions:	Temp: 14° to 122° F (-10° to 50° C) Humidity: up to 90%, relative, non-condensing Limitations in certain weather conditions, including blizzard conditions and freezing rain with high winds.
Approvals:	FCC Class A, CE, IP66, IK10
Country of Origin:	Korea
Warranty:	3 years

## Product Descriptions and Pricing

Model Number	Product Code	Resolution/Description
<b>Camera</b>		
SN673V-C	10260-35	1080P PTZ IP DOME CAMERA; surface-mounted vandal-proof IP66, integral 1/2.8" CMOS day/night camera with 4.7-94 mm 20X zoom lens
<b>Accessories</b>		
V670-HDB243	10492-00	WALL MOUNT; for both indoor and outdoor dome installations; V672D/V672V-1 domes, SN673V and SN693V Cruiser, and is compatible with V670-HCM155 and then V670-HCM150 and V670-HCM151
V670-HCS300	10236-05	IN-CEILING KIT; for mounting SN673V-C Cruiser vandal-proof dome into a ceiling
V670-HDB242-VS8	10246-05	PENDANT ARM WALL MOUNT PREPACK; includes V670V-HDB242-1 wall mount and V670-HDA202-1 pipe mount adapter for mounting SN673V-C Cruiser vandal-proof dome in a pendant configuration from either a wall; compatible with V670-HCM154, which is compatible with the V670-HCM-150 and V670-HCM-151
V660-HAH	10234-00	HEATER ACCESSORY; for SN673V-C Cruiser



V670-HDB243



V670-HCS300



V670-HDB242-VS8

Please contact your regional sales representative or visit [vicon-security.com](http://vicon-security.com) for more information.