



# Release Notes

January 2021

## Initial Firmware Release for V2105 Series Cameras

### General Description

Vicon has released firmware for production for the cameras listed below. The accompanying IP Toolbox discovery tool version 1.9.2.2 is available on Vicon's website.

These cameras and firmware versions have been tested and validated with Vicon's Valerus VMS and with ViconNet V8.x. (See known issues for ViconNet.)

Camera	Older Firmware	Initial Firmware
V2105B-W313MIR, V2105B-W28IR, V2105D-W313MIR	-	VCNT.01.00.0.11.3824

### Vicon Production

The latest firmware and discovery tool are available on Vicon's website. A link is provided in the installation section of this document. Manufacturing will start using the new firmware for new camera production and update all existing inventory.

This is not a mandatory update. However, updating is recommended for cameras intended to work with Vicon's Valerus VMS or other ONVIF-based VMS systems. For other applications, please review the release notes to help determine if the fixes included are relevant to your environment.

Please review the upgrade instructions described at the end of this document.



# Release Notes

## Initial firmware release

This release is the first firmware version to be used with the specified cameras. There may be firmware updates in the future, that will be accompanied by release notes, that summarize what issues are addressed in the new firmware, and if applicable, any known issues in that firmware.

**NOTE:** The cameras are ONVIF Profile Q compliant. Some additional consideration is required for setting the password on the devices and configuring the VMS:

- If the default camera is accessed through a web browser first, the user is forced to set credentials, and these credentials then must be used in Valerus and ViconNet.
- If the default camera is added in Valerus first, the camera credentials are set through Valerus, and these credentials then must also be used to access the camera web interface later.
- If the default camera is added in ViconNet first, using Search Vicon Cameras or Add Vicon Camera, it will add the camera with any username and password, but the video will not stream unless the username and password is ADMIN/1234. The user must change the password in the browser first before adding the camera to ViconNet so the desired credentials can be used.

## Known Issues

### Multiple simultaneous stream

There is a limit to the number of simultaneous streams that the camera can deliver. This can be a problem for a ViconNet configurations where multiple ViconNet stations request a stream from the camera. In these cases the multicast network protocol is an option. For Valerus this is not a problem, as the NVR normally only requests one or two streams from the camera.

### H264/H265

Under certain circumstances, when the camera is added in Valerus, it is possible that the H265 option is not presented in Valerus. This is a timing issue, where the VMS does not receive info about the camera's codec capabilities. When this happens, the camera needs to be removed from Valerus and re-added after the camera is reset.

### Museum Search and Analytics bounding boxes

When Museum Search is disabled in the camera, it will also no longer show the bounding boxes in Valerus that are associated with camera's edge analytics.



# Release Notes

## Installing the Updated Firmware

The latest firmware is available on Vicon’s website from the Software Downloads page. A link is provided below.

<http://www.vicon-security.com/software-downloads-library/vicon-camera-software/>

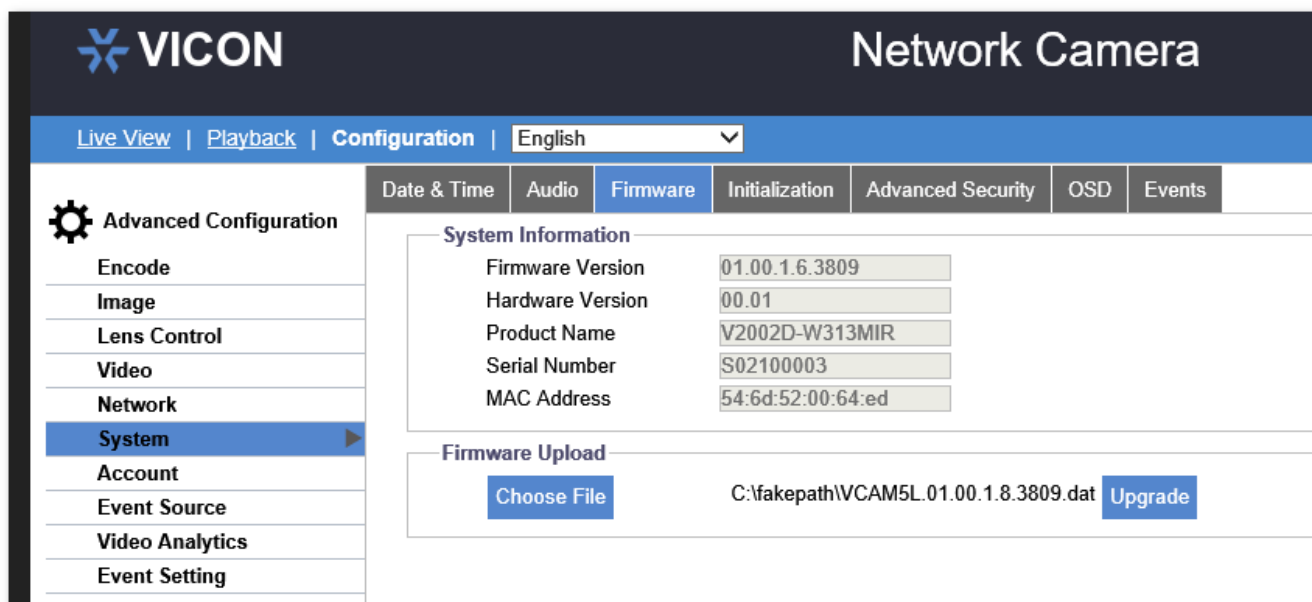
Download the firmware to your PC.

There are two options to install the new firmware in the camera:

- Using web interface of the camera, uploading the firmware directly into the device.
- With the camera discovery utility, IP Toolbox, installed on a PC.

## Camera web interface

In the camera web interface, under Configuration > System > Firmware, press “Choose File” and select the downloaded firmware file. Then press “Upgrade” to start the update. The camera will install the update and reboot with the new firmware version:



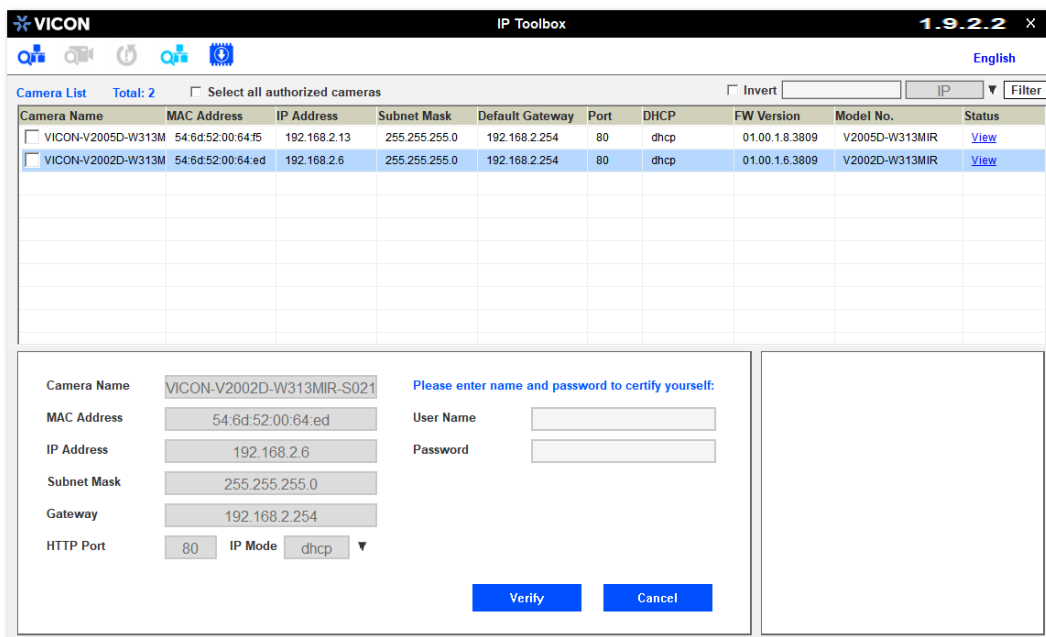


# Release Notes

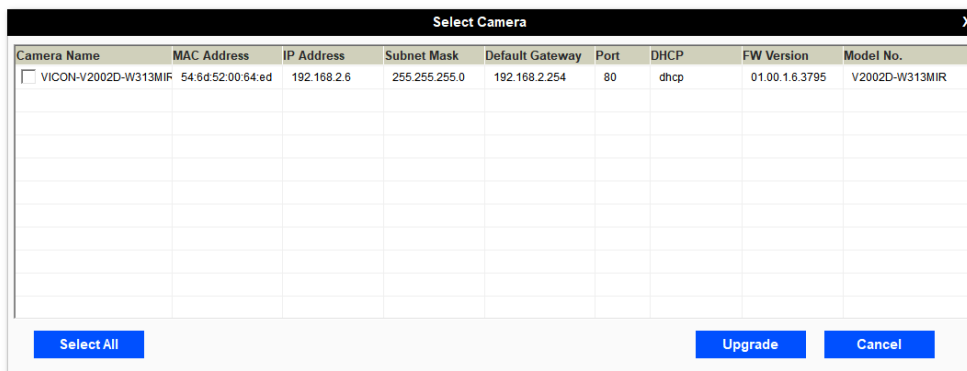
## Using the IP Toolbox utility

Download and install the IP Toolbox utility from the Vicon webpage:

<http://www.vicon-security.com/software-downloads-library/vicon-camera-software/>



Scan the network to discover the applicable cameras on the local network. Press the firmware update button, select the downloaded firmware and fill in the camera credentials. Press the "+" button and the list of cameras will appear that are suitable for the selected firmware. (Note that the cameras must have the same credentials if more than one camera is updated.)



Select the cameras to be updated or press "Select All" to update all cameras. Now press "Update." The camera will install the update and reboot with the new firmware version.