



Sales Alert

V8360W Panoramic Camera

A 360° solution to blind spots, designed with an integral fisheye lens.

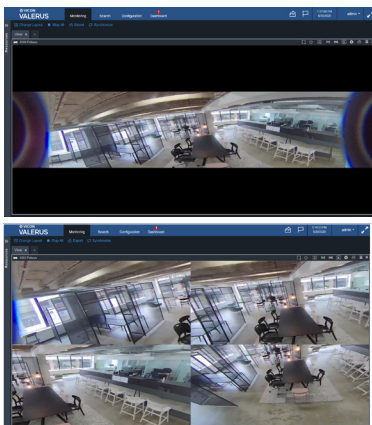


This camera provides complete coverage for proactive and timely responses with a 360-degree solution for blind spots, fisheye lens and powerful analytics. This durable and vandal-proof dome also includes smart encoding and H.265 compression to reduce bandwidth and storage without sacrificing its superior image quality. The V8360W is perfect for a variety of applications, including retail, offices, schools and hospitals.

Available in both 6 MP and 12 MP models, this compact and cost-effective design is practical for both indoor and outdoor settings. These high-performance V8360W cameras replace our V9360 Panoramic Dome series, offering higher performances and analytics that the previous series did not. The V8360W 12 MP is in stock and ready to ship. The V8360W 6 MP can now be pre-ordered and will be available the beginning of August.

Product at a Glance

- ▶ 360° panorama camera
- ▶ Two model options: 6 MP & 12 MP
- ▶ Multiple dewarping modes
- ▶ Advanced analytics
- ▶ IR LEDs (20 m range)
- ▶ 120 db Wide Dynamic Range
- ▶ H.265 and H.264 Smart Encoding



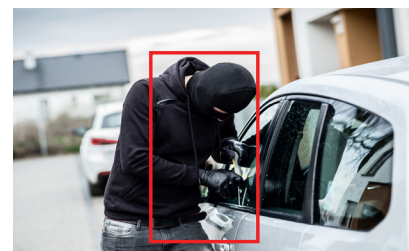
Panoramic Surveillance

The fisheye lens provides an incredible 360° full-range view, eliminating the need for multiple fixed cameras. Offering multiple dewarped views, you can select from various view modes such as panorama and quad view to best accommodate your needs.

The edge-based analytics integrated into this camera are ONVIF compliant and work with numerous video management systems, including Vicon's advanced and intuitive Valerus. When the V8360W is connected to Valerus, operators can dewarp the camera from the server rather than within the camera. In this way, the native file is preserved while playback footage can be reviewed per your needs.

Edge-Analytics

Video Analytics features embedded in the camera can be programmed specifically to generate alarms tailored to the environment. These custom rules reduce false alarms and generate proactive notifications of suspicious activity which improves the effectiveness of the security system.



The V8360W includes the following analytics:

Line Cross/Counter: By pre-selecting a virtual line, this feature will automatically send an alert if a person or object crosses the defined line in either directions.

Object Left/Removed: Notifies users if a potentially suspicious object was left behind or an asset has been removed.

Wrong Direction: Detects people or vehicles travelling in a predefined direction. Operators will receive alerts when there is movement in the wrong direction for proactive responses.

Tampering: Will notify end-users if the camera is moved, covered, vandalized with spray paint, and if something is obstructing the camera's view.

Intelligent Motion Detection: Reduces false alarms by learning normal levels of motion in a scene and only triggering an event when something irregular occurs.

Intrusion Detection: Use this feature to select a region of interest. Once the area is defined, anything that enters or leaves that space sends out an alert.

Loitering: By setting conditions and rules, this feature will alert the end-user if a person or object has stayed in a pre-defined area for too long.

Crowd Detection: This feature estimates the amount of people within a given space and sends an alarm when the capacity for that given space has reached or surpassed its maximum capacity.

Product Descriptions and Pricing

MODEL	PRODUCT CODE	RESOLUTION/ DESCRIPTION
Camera		
V8360W-6	10516-10	Up to 2560×2560 (6.5 megapixel)
V8360W-12	10516-00	Up to 4000×3000 pixels (12 megapixel)
Mounting Options		
V932EZ-BOX-2	10197-58	Back box for ease of cabling
V8360-PLATE	10516-25	Adapter plate for mounting to a 4×4 electrical box
V8360-WDG	10516-30	Wedge mount allows camera to be surface mounted and tilted to maintain full view; allows mounting to 2×2 electrical box
V8360-WDG-PLATE	10516-35	Adapter plate that allows wedge mount to mount to a 4×4 electrical box
V8360W-ICD	10516-40	In-ceiling mounting kit; for drop ceiling
V8360W-ICH	10516-45	In-ceiling mounting kit; for hard ceiling
V8360-ADPT	10516-50	Adapter that allows mounting to several Vicon mounts with the V670-PMB-1
V670-WM	10492-60	Wall mount
V670-PM	10492-65	Pendant mount
V670-PMB-1	10492-56	Pendant mount box

Specifications

MODEL	V8360W SERIES
Camera	
Device Type:	Outdoor-Ready Panoramic Camera
Image Sensor:	1/1.7" Sony progressive scan CMOS
Max Resolution:	6 MP: 2560×2560, 2160×2160, 2048×2048, 1280×1280, 720×720, 640×640, 480×480 12 MP: 4000×3000, 3000×3000, 2560×2560, 2160×2160, 2048×2048, 1280×1280, 720×720, 640×640, 480×480
Image Settings/Analytics:	T-WDR (120 dB True Dynamic Range). Configurable brightness, contrast, saturation, hue, sharpness. White balance. Exposure. DNR (2D/3D). Digital zoom. Privacy masks (8). Flip/Mirror. Defog. Manual Trigger. Museum Search. Advanced Analytics: Tampering. Intelligent Motion Detection (16). Intrusion Detection. Line Cross/Counter. Loitering. Object Left/Removed. Wrong Direction. Crowd Detection. Classification Filter for applicable - Human, Vehicle
Electronic Shutter Speed:	1 - 1/10000 sec
Advanced Image Processing:	Dewarped: Two horizontal images (ceiling mount); Single image (wall mount); Quad images (ceiling/wall mount); Corridor (single) image (ceiling mount). Full 360° raw image
Day/Night Performance:	True Day/Night with mechanical IR cut filter
Advanced Image Processing:	Dewarped: Two horizontal images (ceiling mount); Single image (wall mount); Quad images (ceiling/wall mount) Full 360° raw image
IR Sensitivity:	Up to 65 ft (20 m); 6 LEDs
Minimum Illumination:	Color: 0.09 lux @ f/2.4, 40 IRE; BW: 0 lux (IR LED On)
Lenses	
Lens:	Fixed 1.29 mm focal length, f/2.4
Angle of View:	180° (H); 180° (V); using the mouse digitally pan, tilt and zoom the live view

Specifications continued

MODEL	V8360W SERIES
Network Video Transmission	
Network:	1 RJ45 10M/100M self-adaptive Ethernet port
Image Compression:	H.264 (Baseline/Main Profile/High Profile); H.265 (High Profile); M-JPEG
Video Streaming:	Quad streams (H.264/H.265 x 3; M-JPEG x 1)
Frame Rate:	6 MP: 2560×2560 @ 20 fps; 2160×2160 @ 25fps/30fps (PAL/NTSC) 12 MP: 4000×3000 @ 20fps; 3000×3000 @ 25fps/30fps (PAL/NTSC)
Protocols:	IPv4/IPv6, TCP/IP, UDP, HTTP, RTP, RTSP, RTCP, DHCP, HTTPS, ARP, UPnP, FTP, QoS, Zeroconfig, Bonjour
Users:	Up to 10 Live; up to 3 playback
Web Browser:	Internet Explorer®/Chrome/Firefox®/Safari®
Alarms:	1 alarm input/1 alarm output (relay); terminal block
Audio Streaming:	Two-way audio (1 Input, Mic/Terminal Block), 1 Output (Terminal Block). G.711
Composite Out:	Yes; 2-pin connector
Security:	Multi-user authority, IP address filtering, HTTPS, SSL, multi-user authority; AES256 encryption
Mechanical and Electrical	
Construction:	Aluminum
Mounting:	Mounting holes provided
Controls and Connectors:	PoE/Network: RJ-45. Alarm/Audio: terminal block. 12 VDC Power: terminal block. Micro SDHC/SDXC card slot (256 G max; customer supplied).
Dimensions:	H: 2.3 in. (59 mm); D: 5.9 in. (151.4 mm); Dome Diam: 1.7 in. (43 mm)
Weight:	1.6 lb (0.7 kg)
Input Power:	PoE (IEEE 802.3af Class 0); 12 VDC
Current:	PoE: 0.26 A; 12 VDC: 0.95 A
Power Consumption:	PoE: 12.5 W; 12 VDC: 11.4 W
Environmental	
Operating Conditions:	Temp: Outdoor: -22 to 122° F (-30 to 50° C). Humidity: 0% - 90%, relative, non-condensing.
Approvals:	FCC Class A, CE, IP66, IK10, ONVIF Profile S/T
Country of Origin:	Korea
Warranty:	3 years

Please contact your regional sales representative or visit vicon-security.com for more information.