

# Release Notes

July 2020

## Updated Firmware for V842D-28IR Camera

### General Description

Vicon has released the firmware for production for the camera listed below. The accompanying IPManager discovery tool will remain at version B1103.1.1.0.190121.

This camera and firmware have been tested and validated with Vicon's Valerus VMS and ViconNet V8.x.

Camera	Older Firmware	Newest Firmware
V842D-28IR	IPC_G6103-B0010P10D1806C71	IPC_G6103- B5022P30D1812C72

### Vicon Production

The latest firmware and discovery tool are available on Vicon's website. A link is provided in the installation section of this document. Manufacturing will switch over to the new firmware for new camera production and update all existing inventory.

This is not a mandatory update. Please review the release notes to help determine if the fixes included are relevant to your environment.

# Release Notes



## Fixed in this release

### D1 resolution

This firmware allows selecting a D1 stream resolution (720 x 480).

## Known Issues

### Smart Encoding

If recording at frame rates below 10 fps, there may be momentary pauses in the recording and then a short burst of the delayed frames. There is no loss of video.

### Object Left Analytics

The "Object Left" analytics rule may not work in Valerus due to an ONVIF topic mismatch.

# Release Notes

## Installing the Updated Firmware

The latest firmware is available on Vicon's website from the Software Downloads tab.

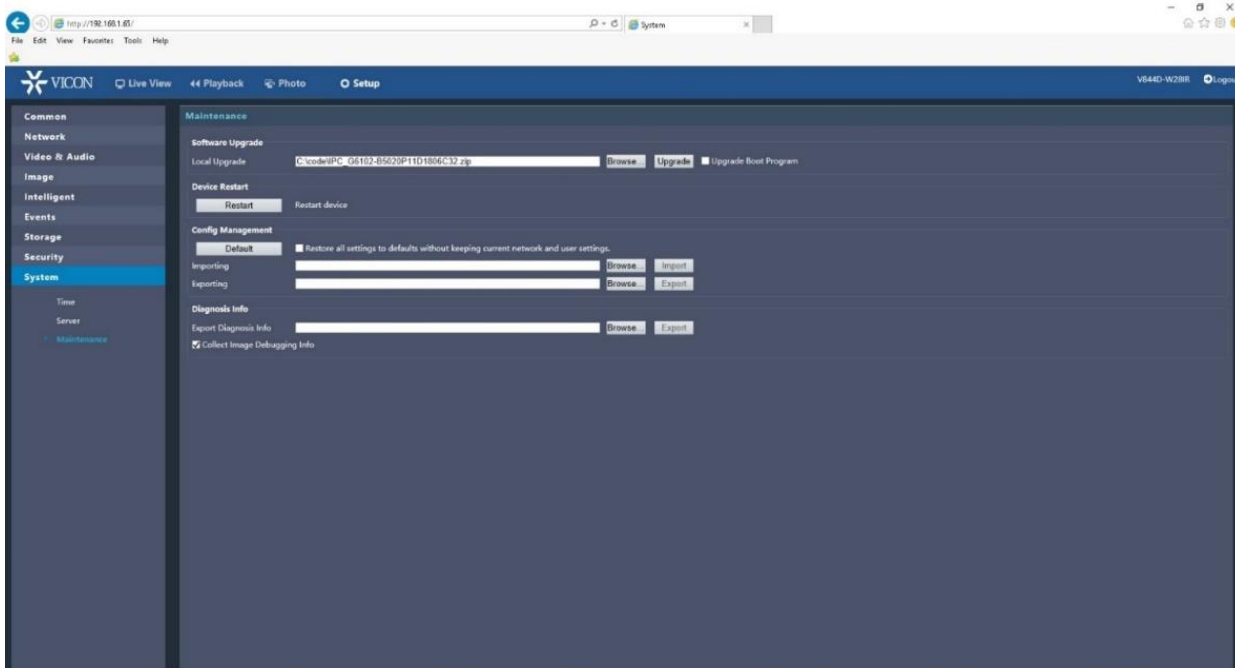
A link is provided below.

<http://www.vicon-security.com/software-downloads-library/vicon-camera-software/>

Download the firmware to your PC. Note: You must use Internet Explorer version 10 or later. Go to the camera's **Settings** page and open the **System** tab. Go to the **Maintenance** section and use the **Browse** button in the Software Upgrade section to locate the firmware on your PC.

**Caution:** You must select the **ZIP file**.

Press the **Upgrade** button. During the upgrade process, do not turn off power to the camera. Wait at least 5 minutes and access the camera again.



The new firmware should be installed. This can be checked by verifying the firmware version loaded in the upper right corner of the **Settings** page. Upgrading the firmware can also be done using the IPmanager utility without browsing to the camera and for batch upgrades.