



Sales Alert

Introducing the V1110B-THM-TEMP

Thermal Body Temperature Measurement Network Camera

Vicon's Thermal Body Temperature Measurement Camera is designed to screen people with potential elevated skin temperatures, so businesses can accurately monitor and control access points.

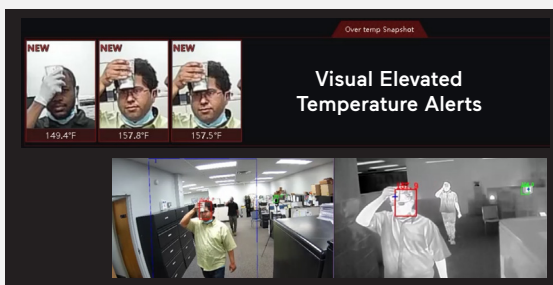


Designed to help screen people for high temperatures, the V1110B-THM-TEMP thermal camera provides contactless body temperature detection for single or multiple people with a stunning accuracy of $\pm 0.54^{\circ}\text{F}$. This powerful, dual-spectrum camera alerts operators to critical events, such as a high-temperature detection or individuals without a mask and provides a snapshot so operators can quickly and easily identify the individual for further screening and verification.

As businesses begin to reopen after the COVID-19 crisis, it's critical to safeguard your employees, customers and your business. The V1110B-THM-TEMP camera helps organizations identify at-risk individuals before they interact with students, patients, customers, and employees. With a response time of 30-milliseconds, the camera can capture up to 16 targets at a time to ensure that no one slips by, though it's recommended to check one person at a time. This camera is designed for a wide range of applications including offices and multi-tenant buildings, schools and universities, hospitals and extended care facilities, airports and transportation depots, correctional facilities and retail establishments.

Product at a Glance

- ▶ Accuracy within $\pm 0.54^{\circ}\text{F}$ ($\pm 0.3^{\circ}\text{C}$)
- ▶ Blackbody provides a stable heat source as a reference point for the camera to ensure accuracy in changing environments
- ▶ Alerts operators to high body temperatures and records images of the face
- ▶ Includes facial mask detection and alarming
- ▶ Resolution: Thermal 400 x 300
Visible 2 MP (1920 x 1080)
- ▶ Bi-spectral 8 mm (thermal) and 2.7-12 mm motorized (visible) lens
- ▶ Response time of 30 milliseconds
- ▶ Intelligent function alarms: smart body detection, perimeter, line cross, object left/object removed
- ▶ Designed to meet FDA requirements
- ▶ Up to 16 target detection



Example of camera used with standalone VTS software.

Contactless Temperature Measurement

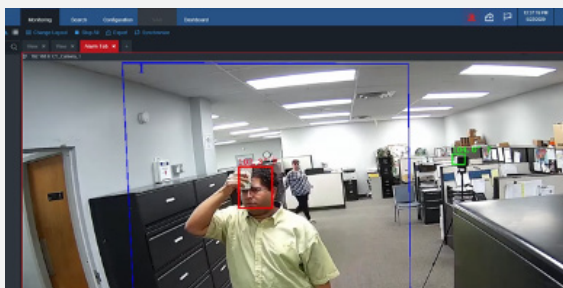
The V1110B-THM-TEMP provides highly accurate, contactless temperature detection by intelligently reading forehead temperatures. Blackbody thermal technology ensures consistent and accurate readings by maintaining calibration, so operators don't need to repeatedly shut down and adjust camera settings.

Effective Surveillance Monitoring

The V1110B-THM-TEMP can be used with its standalone software or configured to integrate with Vicon's video management system, Valerus™.

When used with its standalone software, operators will receive visual alerts to key events such as high temperature detection or if a person is not wearing a mask. The system also stores snapshots of the individual's face for quick and accurate identification.

Integrating this thermal camera with Valerus VMS allows you to bring the camera into your larger security system. Operators can configure Valerus to send alarms including video call ups, emails and mobile push notifications when events like high temperatures are detected. With our renowned event search, operators can also easily find past instances in which people triggered the high-temperature event, streamlining forensic investigations and contact tracing.



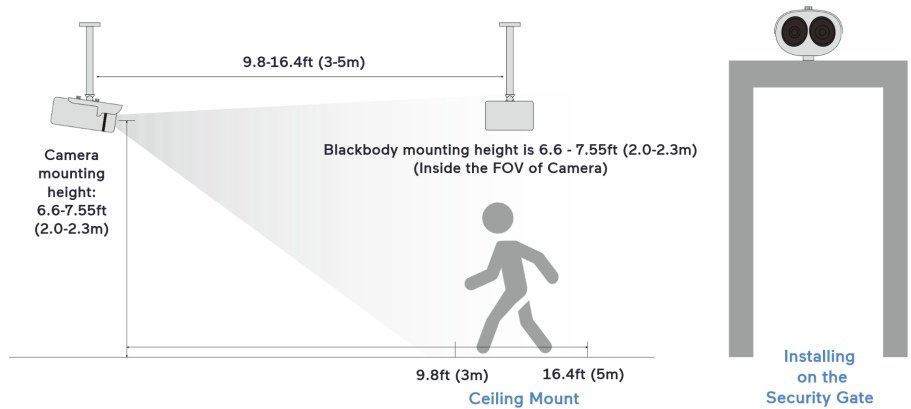
Example of camera when integrated with Vicon's video management system, Valerus™.

Installation Considerations

This camera system includes the items below:



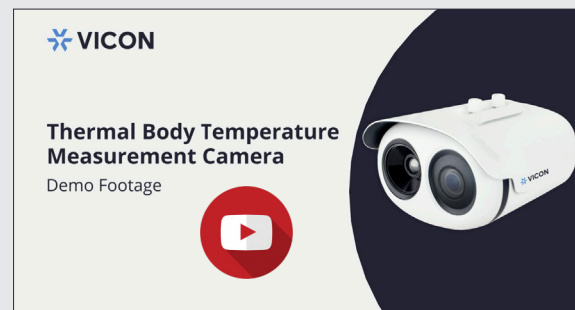
To get the most from your thermal camera, we recommend the following design considerations.



Learn more about our Thermal Body Temperature Measurement Camera.

Please contact your regional sales rep to request a free demo or visit vicon-security.com for more information.

[Learn More](#)



[Watch the video now!](#)

Product Descriptions and Pricing

MODEL NUMBER	PRODUCT CODE	DESCRIPTION	ENVIRONMENT
Camera			
V1110B-THM-TEMP	10498-60	Thermal Body Temperature Measurement Network Camera; 400x300 resolution; 8 to 14 um spectral range; 8 mm lens fixed lens (thermal); 2.7-12 mm motorized lens (visible)	Indoor/Outdoor
Accessories			
V1110B-TRP	10498-65	Tripod mount; for V1110B-THM-TEMP	Indoor
V1110B-WM	10498-66	Wall mount; for V1110B-THM-TEMP	Indoor/Outdoor
V1110B-PM	10498-67	Pendant/Ceiling mount; for V1110B-THM-TEMP	Indoor/Outdoor
V1110B-BKBD	10498-70	Blackbody infrared calibrator for temperature accuracy of the V1110B-THM-TEMP; includes one ceiling mount	Indoor/Outdoor

Specifications

Model	V1110B-THM-TEMP
Thermal Camera	
Device Type:	Long-life uncooled IRFPA Microbolometer
Max Resolution:	400(H) x 300(V) effective pixels
Image Settings:	Temperature Measurement and Parameters. Configurable brightness, sharpness, contrast. ROI (8 zones). Mirror. FFC. Defog. DNR (3D). Alarm Triggers including Temperature alarm, Motion detection, Disk alarm, I/O alarm. Audio. Privacy Masking (4 areas). Digital zoom (16x). Image correction. Image color mode. Polarity/LUT.
Video Content Analysis (VCA):	Smart Body Detection; Single Line Cross; Double Line Cross; Object Left; Object Removed; Perimeter
Pixel Pitch:	17 μ m
Spectral Range:	8 to 14 μ m
Color Palettes:	Black-Heat/White-Heat/Rainbow/Iron-Red; up to 17 modes
Temperature Detection:	Body detection (supports 16 targets). Temperature Alarm for over temperature and temperature difference. Precision: +0.54°F(+0.3°C) with blackbody (emission rate, distance, ambient temperature, etc.). Response Time: <30 ms.
Sensitivity:	40 mK @F1.0, 300K
Visible Camera	
Image Sensor:	1/2.8" Sony CMOS
Resolution:	1920(H) x 1080(V)
Shutter Speed:	1/5 - 1/20,000 sec
Wide Dynamic Range:	True WDR; 120 dB
Min. Illumination:	Color: 0.1 lux @ f/1.2, AGC On B/W: 0.01 lux @ f/1.2, AGC On
S/N Ratio:	>55 dB
Lenses	
Thermal Lens:	Fixed (manual focus); 8 mm; f/1.0
Visible Lens:	Motorized; 2.7-12 mm; f/1.6 - f/2.9
Angle of View:	Thermal: 46° horizontal; 35° vertical Visible: 105° - 32°
Network Video Transmission	
Network:	10/100 Base-T Ethernet; RJ-45; one IP address for two channels
Image Compression:	H.265; H.264; M-JPEG
Video Streaming:	Thermal: Main Stream/Sub Stream: D1/CIF Visible: Main Stream 1920x1080/1280x720; Sub Stream D1/VGA/640x360/CIF/QVGA
Max. Frame Rate:	Thermal: Up to 30/25 fps Visible: Up to 25/30 fps
Max. User Access:	Up to 10 users
Audio:	Two-way audio 1 audio input, 1 audio output;
Protocols:	IPv4/IPv6, TCP/UDP, RTP/RTSP/RTCP, SMTP, HTTP, DHCP, PPPOE, ONVIF G/S/Q, DNS, SIP, 802.1x
Web Browser:	Up to Internet Explorer® 11; Chrome; Firefox
Alarms:	2 alarm inputs/2 alarm outputs
Security:	User security authentication; Reset, Hardware WatchDog

Specifications continued

Model	V1110B-THM-TEMP
Mechanical	
Construction:	Metal
Mounting:	Surface-mount. Mounting tripod available.
Controls and Connectors:	PoE/Network: RJ-45 (waterproof). Alarm In/Out: 3-pins/4-pins. Power: connector for 12 VDC power supply. Audio In/Out: jacks. Reset to default button. RS-485: 2-pins. Micro SD card slot.
Dimensions:	Length: 8.3 in. (212 mm); Width: 7.2 in. (182 mm); Height: 5.4 in. (136 mm)
Weight:	4.4 lb (2 kg)
Electrical	
Input Power:	PoE; 12 VDC
Current:	12 VDC: 0.83 A
Power Consumption:	10 W max
Environmental	
Operating Conditions:	Temp: -22 to 140° F (-30 to 60° C) Humidity: 0% - 90%, non-condensing
Approvals:	FCC; CE; IP66
Country of Origin:	China
Warranty:	3 years
Blackbody	
Temperature Range:	86 to 122° F (30 to 50° C)
Emissive Area:	2.8 x 2.8 in. (72 x 72 mm)
Temperature Resolution:	0.018° F (0.01° C)
Accuracy:	±0.36° F (±0.2° C) [@ factory calibration, ambient temperature 73.4° F ±9° F (23° C ±5° C)]
Stability:	±0.27° F/10 min (±0.15° C/10 min)
Emissivity:	0.97 ±0.02
Power Supply:	24 VDC; power supply included
Operating Ambient Temperature:	32 to 104° F (0 to 40° C) Humidity: 20% - 90%, non-condensing
Dimensions:	7.1 x 4.3 x 4.3 in. (180 x 110 x 110 mm)
Weight:	3.1 lb (1.4 kg)

Please contact your regional sales representative or visit vicon-security.com for more information.