

Heater assembly for Color and Day / Night domes

Thank you for choosing the heater assembly for 3-Axis Vandal resistant domes.
Before attempting to connect or operate this product, please read and follow these instructions.

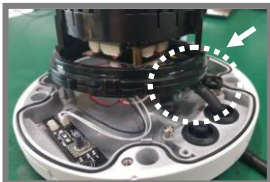
General

This heater assembly is designed to provide heat to the new 3-Axis Vandal resistant domes.
The manual is designed to assist in the fitting of the heater assembly.

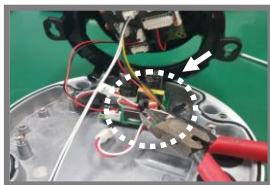
Contents of Package

1. Heater PCB
2. Heater
3. User Manual
4. Screw

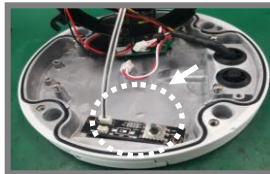
Installation



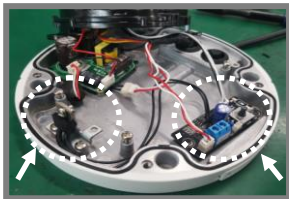
1. Remove support bracket



2. Remove cable tie of the heater power cable



3. Remove OSD Control PCB



4. Install Heater & Heater + OSD Control PCB



5. Fasten support bracket

Specification

Power source	Power supply 24VAC/12VDC
Power consumption	Power consumption 20W Max
Operating Temperature	Heater ON : at 41°F(5°C)
	Heater OFF : at 59°F(15°C)