

## SALES ALERT

# Vicon's Popular NDAA-Compliant Roughneck Line Now Includes the Highly Anticipated PTZ



As NDAA regulations continue to pose challenges for the security industry, Vicon's Roughneck camera line has now become the top choice of industry professionals.

As Vicon continues to fill the camera line gaps left behind by NDAA regulations, we're proud to announce our V2002D-PTZ to the Roughneck Pro family. Not only does the Roughneck Pro PTZ deliver outstanding quality and performance, but it is strategically positioned to match price points typically found at common now-banned companies. Boasting premium features such as Starlight low-light imaging, AI-driven analytics, high-speed processing and more, it is understandable why this PTZ will quickly become your camera of choice. As with all our Roughneck camera models, this PTZ is ONVIF certified for quick and easy integration with your existing VMS.

The Roughneck PTZ is ideal for larger areas requiring close attention to detail and quick verification of critical events.

## Durability You Can Trust

Engineered to withstand any type of environment, the IP66 and IK07 rated V2002D-PTZ includes an automatic heater and blower to withstand extreme conditions. This PTZ also provides triple-streaming video with H.265/H.264 smart compression to reduce file sizes and preserve bandwidth.

## Remarkable Images, Day and Night

The V2002D-PTZ provides exceptional views with a powerful 30x optical/10x digital zoom and a motorized focus and zoom autoiris lens. Ensuring round-the-clock surveillance and wide area coverage, the PTZ ensures crisp and refined detail day or night. With True WDR, users can overcome challenging lighting conditions during the day, while 492 ft (150 m) of IR illumination and autofocus capabilities ensure you can see every detail even in low-light conditions.

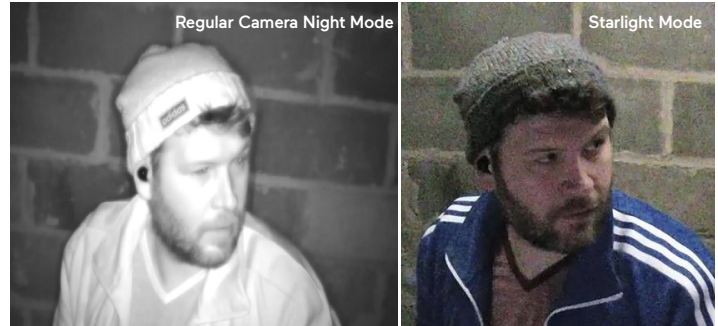


Smart IR adjusts the intensity of the camera's infrared LEDs while built-in Adaptive IR adjusts the IR to environmental light changes. Another strong standout feature is our advanced starlight imaging. Starlight illumination allows users to see vivid colors and sharp details when traditional camera would only show black-and-white. This allows operators to see critical forensic details that they would otherwise miss with standard PTZ cameras.

### Adaptive IR intelligently distributes IR light for clearer backgrounds



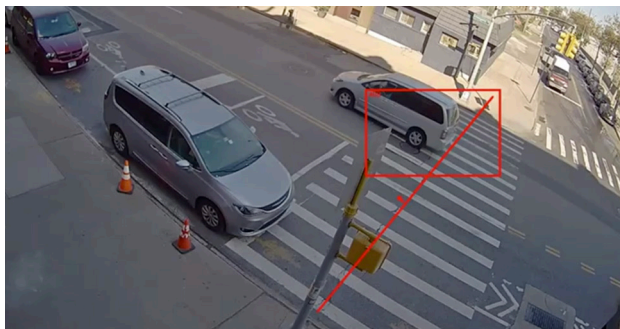
### Starlight provides clear, color images when other cameras would show black-and-white



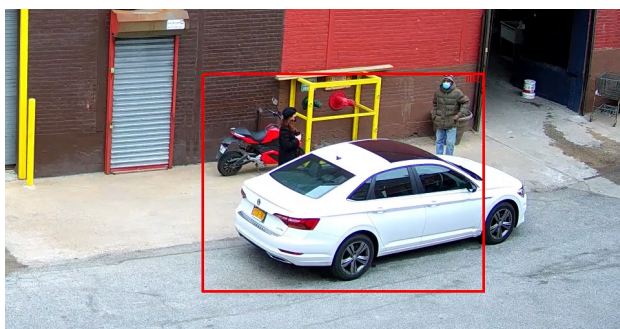
## Superior Performance

Beyond incredible imaging, this PTZ features powerful advanced video analytics that can be combined and tailored to meet the needs of your security operation. Users can program up to 5 analytic profiles, specific to a preset. These profiles can then be scheduled to provide the analytic coverage desired.

### Line Counting / Crossing



### Loitering Detection



The Roughneck PTZ is now available for immediate ordering.

### Advanced Analytics

Motion Detection

Tamper Detection

Defocus Detection

Line Cross / Counting

Loitering

Area Counting

Intrusion

Object Removed

Object Left

Wrong Direction

## Specifications

MODEL	V2002D-PTZ
Image Sensor:	1/2.8 inch Sony
Max Resolution:	2MP (1080p)
Image Settings:	Digital image effects: defog, flip and mirror. Configurable brightness, contrast, saturation, hue, sharpness. White balance. Backlight Compensation (BLC). HLC. Gain control. Gamma correction. Electronic shutter speed. Day/night mode. Dynamic Noise Reduction (3 DNR). Motion detection (4 programmable zones). Privacy masking (8 masks). Dynamic ROI. Event notification.
Intelligent Video Analytics:	5 profile/presets: Motion, Tampering/Defocus, Intrusion, Loitering, Line Cross/Counting, Object Left/Removed, Area Counting, Wrong Direction
Electronic Shutter Speed:	1/30 ~ 1/10,000 sec
Day/Night Performance:	True day/night (IR cut filter)
Wide Dynamic Range (WDR):	True WDR (120 dB)
Minimum Illumination:	Color: 0.007 lux; B/W: 0.002 lux
IR Distance:	Adaptive IR; Smart IR (Automatic): 492 ft (150 m)
<b>Lenses</b>	
Focal Length:	4.5 - 135 mm (30X optical zoom); digital 10X
Max. Aperture:	f/1.68 - f/4.4
Iris:	Autoiris
Zoom/Focus Adjust:	Motorized focus and zoom
Field of View:	5° - 60° (H); 3° - 38° (V)
<b>Network Video Transmission</b>	
Network:	10Base-T, 100Base-TX, RJ-45
Image Compression:	H.265/H.264 and M-JPEG
Resolution:	1920×1080 (1080P), 1280×960/720, 800×600, 640×480, 640×360, 320×240
Protocol:	ARP, DHCP, DNS, FTP, HTTP, HTTPS, HLS, ICMP, IGMP, IPv4/6, LDAP, NTP, RTSP/RTCP/RTP, RTMP, QoS, SMTP, SNMP v1/2c/3, TCP, TLS/TLS, UDP, UPnP, 802.1X, UPnP, Bonjour, DDNS, PPPoE; ONVIF S/G/Q/T
Frame Rate:	Max. 30 fps (25 fps, PAL)
Streams:	Triple streaming. Single: 2 MP@60fps; Dual: 2 MP@60fps + 2 MP@30fps; Triple: 2 MP@60fps + 2 MP@30fps + 720@30 fps
Users:	Live viewing for up to 10 clients
Web Browser:	Internet Explorer®; Safari®, Firefox®, Google Chrome®, Microsoft® Edge
Security:	IP address filtering, HTTPS encrypted data transmission, SSL, IEEE 802.1X, Digest Authentication, Advanced Security
Local Recording:	Micro-SD slot provided; customer supplied SDHC/SDXC card
<b>Mechanical</b>	
Construction:	Aluminum base; polycarbonate dome bubble
Pan Range:	360° continuous pan
Pan Speed:	300°/second maximum
Tilt Range:	95° (-15° to 90°)
Tilt Speed:	160°/second maximum
Presets:	128
Tours/Pattern:	4/4
Alarm:	2 alarm inputs; 2 alarm output

## Specifications continued

Mechanical continued	
Audio Capability:	Two-way audio; G.711 compression
Mounting:	Mounting accessories available. Refer to Ordering Information.
Dimensions:	7.5 in. (190 mm) (Diam) x 13.2 in. (336 mm) (H); refer to dimensional diagram
Weight:	11.5 lb (5.2 kg)
Electrical	
Input Power:	PoE++ (IEEE 802.3bt, Class 7); 24 VAC; 48 VDC
Current (IR on):	2.5 A @24 VAC; 1.25 A @48 VDC
Power Consumption:	Total Power: 36.4 W. PTZ Camera: 11 W; IR: 19 W; Heater: 5.5 W; Blower: 0.9 W. Note that blower is always on; heater turns on when temperature is lower than 59° F (15° C).
Controls and Connectors	
Indicators and Connectors:	Power: 24 VAC/48 VDC: terminal block. Network/PoE: RJ-45 CAT 5. Audio In/Out and Alarm In/Out: screw terminal. SDHC/SDXC Card Slot. Reset button. Default button. Indicators: green LED flashes for booting and software updating.
Environmental	
Operating Conditions:	Temp: -40° to 140° F (-40° to 60° C) Humidity: up to 90%, relative, non-condensing Limitations in certain weather conditions, including blizzard conditions and freezing rain with high winds.
Approvals:	UL, FCC Class A, CE, IP66, IK07; RoHS
Country of Origin:	Taiwan

## Product Descriptions and Pricing

MODEL NUMBER	PRODUCT CODE	RESOLUTION/DESCRIPTION	MSRP
Roughneck PTZ			
V2002D-PTZ	10561-00	1080P (2 MP) PTZ DOME CAMERA; vandal-proof IP66, integral 1/2.8" day/night camera with 4.5-135 mm 30X zoom lens; NDAA/GSA/TAA compliant	\$ 2,350
Accessories			
SVFT-UWM-1	10476-00	WALL MOUNT; large; indoor/outdoor; compatible with V2000D-PTZ and V2000D-PM	\$ 152
SVFT-WM-1	10476-05	WALL MOUNT; small; indoor/outdoor; compatible with V2000D-PTZ and V2000D-PM	\$ 87
SVFT-UCM-1	10476-15	CEILING MOUNT; indoor/outdoor; compatible with V2000D-PTZ	\$ 53
SVFT-UPM-2	10476-20	UNIVERSAL PARAPET MOUNT; indoor/outdoor; compatible with V2000D-PTZ	\$ 327
V-24CMB-3	10476-38	OUTSIDE CORNER MOUNT BRACKET; for corner mounting with an SVFT wall mount	\$ 112
V-20B-A-3	10476-46	POLE MOUNT ADAPTER; for 4-10 in. diameter poles; painted aluminum construction, includes mounting straps; for pole mounting with an SVFT wall mount	\$ 183
VPOE-INJ-60	10193-10	60 W PoE midspan injector required for use for PoE++	\$ 125



SVFT-UWM-1



SVFT-WM-1



SVFT-UCM-1



SVFT-UPM-2



V-24CMB-3



V-20B-A-3



VPOE-INJ-60

Please contact your regional sales representative or visit [vicon-security.com](https://vicon-security.com) for more information.

Vicon and its logo are registered trademarks of Vicon Industries Inc. Product specifications are subject to change without notice. Copyright ©2021 Vicon Industries Inc. All rights reserved. All other trademarks used in this publication are the property of their owners.